



EMEA | F24
MOUNTAIN HARDWEAR
FW24
INLINE



KOR ALLOY™ CREW - 2077551



353 Combat Green

010 Black
24

097 Glacial

MERKMALE

- Lightweight and breathable stretch ripstop Pertex® Quantum Air fabric
- Strategically mapped hybrid of AirMesh™ lining and Primaloft® Gold Active for the perfect combination of warmth and breathability
- Underarm is mapped with highly air-permeable fabric to optimize breathability in active pursuits
- Exterior secure zippered chest pocket with elastic webbing for gear organization
- Kangaroo style front pocket with interior secure zippered pocket
- Stretch woven cuff to seal in warmth
- Reflective heat transfer MHW logo at chest

STOFFE

- Körper : Pertex® Quantum Air™ 20D Coated Ripstop (front body and sleeves). 100% Nylon | Pertext® Quantum Air™ 20D Stretch Ripstop (underarms, back panel, and chest pocket). 59% Recycled Nylon, 41% Nylon
- Futter : AirMesh™: 100% Polyester
- Material Isolierung : Primaloft® Gold Active 40g (front body and sleeves). 60% Recycled Polyester, 40% Polyester

S M L XL XXL				
--------------	--	--	--	--

KOR ALLOY™ TIGHT - 2077621



010 Black
24

353 Combat Green

MERKMALE

- Lightweight and breathable stretch ripstop Pertex® Quantum Air fabric
- Strategically mapped hybrid of AirMesh™ lining and Primaloft® Gold Active for the perfect combination of warmth and breathability
- Strategically mapped stretch woven panels for form-fitting function
- Two secure zippered hand pockets
- Soft elastic waistband with adjustable drawcord for a perfect fit

STOFFE

- Körper : Pertex® Quantum Air™ 20D Coated Ripstop (knees and seat). 100% Nylon | Pertex® Quantum Air™ 20D Stretch Ripstop (upper front and back hip area and waistband). 59% Recycled Nylon, 41% Nylon | 85% polyester, 15% Elastane
- Futter : AirMesh™: 100% Polyester
- Material Isolierung : Primaloft® Gold Active 40g (seat and knees). 60% Recycled Polyester, 40% Polyester

S M L XL XXL	▲ R			
--------------	-----	--	--	--

BOUNDARY RIDGE™ GORE-TEX JACKET - 2043311



859 Raw Carnelian, Black
24



007 Volcanic



237 Dark Bolt, Black



430 Montauk Blue, Black
24

MERKMALE

- Recycled waterproof, breathable 3-layer GORE-TEX® ePE offers reliable protection and comfort
- Helmet-compatible hood with three-way drawcord adjustment
- Underarm zip vents
- Two large secure zippered chest pockets with interior gear organization
- Two secure zippered lower hand pockets
- Pass pocket on the sleeve
- Two way center front zipper
- Internal stretch mesh drop pocket with integrated goggle wipe patch

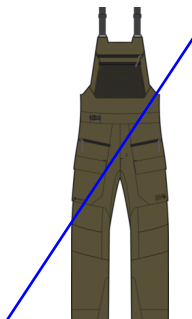
- Internal zip-off removable powder skirt with jacket-to-pant integration
- Adjustable hook and loop cuffs to seal in warmth
- Dual drawcord hem adjustment
- Integrated RECCO® reflector for searchability in emergency situations

STOFFE

- Körper : GORE-TEX® ePE 75D 3L Plain Weave with a Brushed Back: 100% Recycled Polyester

S M L XL XXL	△ 32		Relaxed	
--------------	------	--	---------	--

BOUNDARY RIDGE™ GORE-TEX BIB - 2043301



354 Combat Green



009 Black



233 Golden Brown

MERKMALE

- Recycled waterproof, breathable 3-layer GORE-TEX® ePE offers reliable protection and comfort
- Traditional bib design with single 3/4 length side zipper for entry
- Stretch-woven upper panel for freedom of movement
- Large secure zippered horizontal chest pocket
- Stretch mesh chest pocket
- Integrated ladder lock adjustable belt to fine tune fit
- Zippered front fly
- Dual side zips for ventilation
- Two secure zippered hand pockets with static webbing gear loop

- Two secure hook and loop flap thigh pockets with internal gear organization
- Jacket-to-pant connector loop
- Internal hem cinch to ensure secure fit around boot
- Internal snow gaiter with boot hook
- Reinforced 600D CORDURA® kick patches that extend around bottom hem
- Integrated RECCO® reflector for searchability in emergency situations

STOFFE

- Körper : GORE-TEX® ePE 75D 3L Plain Weave with a Brushed Back: 100% Recycled Polyester

S M L XL XXL	▲ S R L		Relaxed	
--------------	---------	--	---------	--

CLOUD BANK™ GORE-TEX JACKET - 2091881



007 Volcanic



444 Asiatic Blue, Montauk Blue, Black



859 Raw Carnelian, Black

24

24

MERKMALE

- Waterproof, breathable 2-layer GORE-TEX ePE fabric enables durable performance with a low environmental footprint
- Body-mapped insulation provides 80 g at the body and 60 g at the sleeves and hood
- Helmet-compatible hood with three-way drawcord adjustment
- Underarm zip vents with mesh backing expels heat while keeping snow out
- Zippered chest pocket with flap closure
- Two zippered hand pockets
- Pass pocket on the sleeve
- Two way center front zipper with storm flap
- Internal zippered pocket

- Internal drop pocket
- Internal powder skirt with jacket-to-pant integration
- Internal stretch cuffs with thumb loops
- Hook-and-loop adjustable cuffs
- Dual lower hem adjusters to seal in warmth
- Integrated RECCO® reflector for searchability in emergency situations

STOFFE

- Körper : GORE-TEX® ePE 75D 2-Layer: 100% Recycled Polyester
- Material Isolierung : 80 g (body) / 60 g (underarms & hood) Polyester Insulation: 85% Recycled Polyester / 15% Polyester

S M L XL XXL	△ 31.5		Relaxed	
--------------	--------	--	---------	--

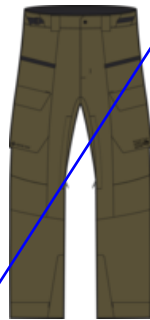
CLOUD BANK™ GORE-TEX PANT - 2091901



430 Montauk Blue



010 Black



353 Combat Green

24

24

MERKMALE

- Waterproof, breathable 2-layer GORE-TEX ePE fabric enables durable performance with a low environmental footprint
- Snap front closure with zippered front fly and belt loops
- Integrated webbing belt with a ladder lock buckle
- Two zippered hand pockets
- Two thigh pockets with flap closures and internal stretch band to organize and secure a phone, walkie, or GPS tracker
- Inner thigh vents with mesh backing to expel heat while keeping snow out
- Jacket-to-pant attachment loop

- Reinforced 600D CORDURA® kickpatches that extend around bottom hem
- Cinches at cuffs to accommodate a variety boots
- Internal snow gaiter with boot hook
- Integrated RECCO® reflector for searchability in emergency situations

STOFFE

- Körper : GORE-TEX® ePE 75D 2-layer: 100% Recycled Polyester
- Material Isolierung : 40 g polyester insulation: 85% Recycled Polyester / 15% Polyester

S M L XL XXL	▲ S R L		Relaxed	
--------------	---------	--	---------	--

FIRST TRACKS™ JACKET - 2092021



361 Mantis Green, Stone Green, Black



366 Badlands, Dunes, Black



444 Asiatic Blue, Montauk Blue, Black



650 Solar Pink, Black

MERKMALE

- 2-layer waterproof Dry.Q® fabric provides breathable weather protection
- Helmet-compatible hood with three-way drawcord adjustment
- Underarm zip vents with mesh backing expels heat while keeping snow out
- Two secure zippered chest pockets
- Two hand pockets with flap closure and secure side zipper opening
- Pass pocket on the sleeve
- Snap front placket covering a two way center front zipper
- Internal secure zippered pocket
- Internal drop pocket

- Internal powder skirt with jacket to pant integration
- Internal stretch cuffs with thumb loops
- Hook-and-loop adjustable cuffs
- Dual lower hem adjusters to seal in warmth
- Integrated RECCO® reflector for searchability in emergency situations

STOFFE

- Körper : Solids: Dry.Q® 70D 2-layer Faille Weave. 100% Recycled Nylon Prints: Dry.Q® 75D 2-layer Plain Weave. 100% Polyester
- Futter : 20D Nylon Taffeta: 100% Nylon

S M L XL XXL	△ 31.5		Relaxed	
--------------	--------	--	---------	--

FIRST TRACKS™ BIB - 2091991



010 Black



397 Stone Green



430 Montauk Blue, Black

MERKMALE

- 2-layer waterproof Dry.Q® fabric provides breathable weather protection
- Body-mapped warmth provides 60 g of insulation at the seat and knees
- Adjustable low-profile suspenders
- Zippered chest pocket with internal stretch band is compatible with most phone sizes
- Integrated webbing belt with a ladder lock buckle
- Zippered front fly
- Side zips for easy on and off and venting
- Two secure zippered thigh pockets
- Inner thigh vents with mesh backing to expel heat while keeping snow out

- Zippered rear pocket
- Jacket-to-pant attachment loop
- Reinforced 600D CORDURA® kickpatches that extend around bottom hem
- Cinches at cuffs to accommodate a variety of boots
- Internal snow gaiter with boot hook
- Integrated RECCO® reflector for searchability in emergency situations

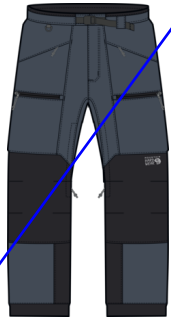
- Material Isolierung : 60 g Polyester Insulation (seat & knees): 85% Recycled Polyester/ 15% Polyester

STOFFE

- Körper : Solids: Dry.Q® 70D 2-layer Faille Weave. 100% Recycled Nylon Prints: Dry.Q® 75D 2-layer Plain Weave. 100% Polyester
- Futter : 20D Nylon Taffeta: 100% Nylon

S M L XL XXL	▲ S R L		Relaxed	
--------------	---------	--	---------	--

FIRST TRACKS™ PANT - 2077571



430 Montauk Blue, Black



010 Black



262 Dunes, Black



397 Stone Green, Black

MERKMALE

- 2-layer waterproof Dry.Q® fabric provides breathable weather protection
- Integrated adjustable webbing belt
- Snap front closure with zippered fly
- Two secure zippered soft brushed hand pockets
- Two secure zippered thigh pockets
- Secure zippered back pocket
- Inner thigh vents with mesh backing
- Jacket-to-pant attachment loop
- Internal hem cinch to ensure secure fit around boot
- Internal snow gaiter with boot hook

- Reinforced 600D CORDURA® kick patches that extend around bottom hem
- Integrated RECCO® reflector for searchability in emergency situations

STOFFE

- Körper : Solids: Dry.Q® 70D 2-layer Faille Weave. 100% Recycled Nylon Prints: Dry.Q® 75D 2-layer Plain Weave. 100% Polyester
- Futter : 20D Nylon Taffeta: 100% Nylon

S M L XL XXL	▲ S R L		Relaxed	
--------------	---------	--	---------	--

STORM WHISPERER™ INSULATED JACKET - 2077021



417 Blue Slate



010 Black



859 Raw Carnelian

24

MERKMALE

- Pertex® Shield provides lightweight waterproof protection while remaining highly breathable and lined with ultra-lightweight ripstop fabric
- 800-fill RDS®-certified down insulation
- Fully insulated adjustable hood with rear cinch
- Water resistant two-way center front zipper
- Underarm zip vents with mesh backing
- Two secure zippered hand pockets
- Interior secure zippered pocket
- Interior stretch mesh drop pocket
- Stretch-knit cuffs to seal in warmth
- Elastic bound hem to seal in warmth

- Drop tail for extra coverage
- Certified by Control Union. License Number: CU 848416

STOFFE

- Körper : Pertex® Shield 20D Ripstop 2-layer: 100% Recycled Nylon
- Futter : Whisperer 10D x 10D Ripstop
- Material Isolierung : 800-fill RDS®-certified Down

S M L XL XXL			Slim	
--------------	--	--	------	--

STRETCH OZONIC™ INSULATED JACKET - 2092311



010 Black



351 Bright Olive



361 Mantis Green



859 Raw Carnelian

MERKMALE

- Dry.Q 2-layer stretch ripstop fabric is super soft and quiet
- Mapped stretch insulation with stretch lining for full freedom of movement
- Adjustable hood with rear cinch
- Underarm zip vents with mesh backing

- Material Isolierung : 100g Stretch Insulation: 100% Polyester

STOFFE

- Körper : Dry.Q® 50D Stretch Ripstop 2-layer: 100% Recycled Polyester
- Futter : 20D Nylon Taffeta: 100% Nylon

S M L XL XXL	△ 29		Standard	
--------------	------	--	----------	--

STRETCH OZONIC™ JACKET - 2093461



418 Dark Caspian



010 Black



347 Surplus Green



351 Bright Olive



859 Raw Carnelian

MERKMALE

- Dry.Q 2.5-layer stretch ripstop fabric is super soft and quiet
- Adjustable hood
- Underarm zip vents
- Zippered chest pocket
- Two zippered hand pockets
- Highly packable design stuffs into its own hand pocket with internal carabiner clip loop
- Hook-and-loop adjustable cuffs
- Dual lower hem adjusters to seal in warmth

STOFFE

- Körper : Dry.Q® 50D Stretch Ripstop 2.5-Layer: 100% Recycled Polyester

S M L XL XXL	△ 29		Slim	
--------------	------	--	------	--

STRETCH OZONIC™ PANT - 2093501



010 Black

MERKMALE

- Dry.Q 2.5-layer stretch ripstop fabric is super soft and quiet
- Elastic waistband with snap front closure and zippered fly
- Drawcord adjustment at waist
- Front zippered pocket
- Side zips the are 3/4 of the pants for easy on and off
- Elastic cuffs with snap closure

STOFFE

- Körper : Dry.Q® 50D Stretch Ripstop 2.5-layer: 100% Recycled Polyester

S M L XL XXL	▲ S R L		Standard	
--------------	---------	--	----------	--

CHOCKSTONE™ ALPINE HOODED JACKET - 2077761



010 Black



347 Surplus Green



842 State Orange

MERKMALE

- Four-way stretch Chockstone™ doubleweave fabric with high abrasion resistance
- Helmet-compatible hood with three-way drawcord adjustment for secure positioning while moving
- Laminated anti-snap draft flap with chin guard
- Two-way center front zipper
- Two harness-compatible secure zippered hand pockets
- Two exterior secure zippered chest pockets
- Two interior stretch mesh drop pockets
- Stuffs into hand pocket with carabiner clip loop

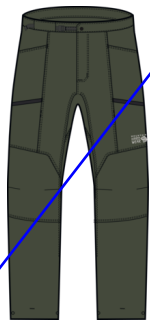
- Hook-and-loop adjustable cuffs to seal in warmth
- Dual lower hem adjusters to seal out weather

STOFFE

- Körper : Chockstone™ Double Weave Soft Shell: 92% Nylon, 8% Elastane

S M L XL XXL			Slim	
--------------	--	--	------	--

CHOCKSTONE™ ALPINE PANT - 2091871



347 Surplus Green



010 Black

24

MERKMALE

- 4-way-stretch, double-weave fabric with high abrasion resistance
- Snap front closure and zippered fly
- Fully adjustable waist with integrated belt to customize your comfort
- Enhanced knee articulation enables full range of motion
- Two hand pockets
- Two zippered thigh pockets with internal elastic bands and loops for tool organization
- Cuff cinch with lace hook secures to shoelaces and keeps from hiking up the calf

STOFFE

- Körper : Chockstone™ Double Weave Soft
Shell: 92% Nylon, 8% Elastane

S M L XL XXL	▲ S R L		Slim	
--------------	---------	--	------	--

CHOCKSTONE™ ALPINE LT HOODED JACKET - 2063191



010 Black



356 Moon Moss



417 Blue Slate

MERKMALE

- Four-way stretch, Chockstone™ LT Double Weave fabric with high abrasion resistance
- Helmet-compatible hood with three-way drawcord adjustment for secure positioning while moving
- Laminated anti-snap draft flap with chin guard
- Two way center front zipper
- Two harness compatible, secure zippered hand pockets
- Internal zippered pocket
- Internal drop pocket

- Highly packable design stuffs into hand pocket with carabiner clip loop
- Elasticized cuffs
- Dual lower hem adjusters to seal out weather

STOFFE

- Körper : Chockstone™ LT Double Weave Soft
Shell: 88% Nylon, 12% Elastane

S M L XL XXL	△ 30		Slim	
--------------	------	--	------	--

CHOCKSTONE™ ALPINE LT PANT - 2063201



347 Surplus Green



010 Black

MERKMALE

- Four-way stretch, Chockstone™ LT Double Weave fabric with high abrasion resistance
- Snap front closure and zippered fly
- Fully adjustable waist with integrated belt to customize your fit
- Enhanced knee articulation enables full range of motion
- Two secure zippered hand pockets
- Secure zippered thigh pocket with internal elastic band and loop for gear organization
- Hem cinch and eyelets at cuffs

STOFFE

- Körper : Chockstone™ LT Double Weave Soft Shell. 88% Nylon, 12% Elastane

S M L XL XXL	▲ S R L		Slim	
--------------	---------	--	------	--

ABSOLUTE ZERO™ SUIT - 1899101



742 State Orange



Photo Not Available



Photo Not Available



Photo Not Available



MERKMALE

- Pertex 20D Diamond Fuse Ripstop shell fabric with Pertex® 50D reinforced panels at elbows, knees, seat, and hem
- Box wall baffle construction with 800-fill RDS-certified down Certified by Control Union. License Number: CU 848416
- Oxygen mask compatible collar with stow feature
- Low profile, insulated fixed hood with drawcord for quick adjustments
- Extended underarm vent zippers

- Internal suspender system with sternum adjustments
- The Responsible Down Standard certifies down against animal welfare requirements and tracks it from the source to the final product.

STOFFE

- Körper : Pertex® 20D Diamond Fuse Ripstop Pertex® 50D Reinforced Panels. 100% Nylon
- Futter : Z-Grav 15D Ripstop. 100% Nylon
- Material Isolierung : 800-fill RDS®-certified Down. Certified by Control Union. License Number: CU 848416

XS S M L XL XXL	△ 28		Relaxed	
-----------------	------	--	---------	--

GHOST WHISPERER™ UL HOODY - 2092051



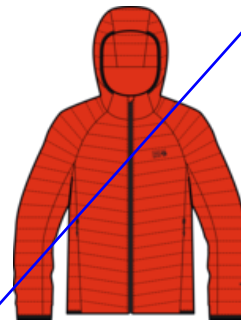
417 Blue Slate



010 Black



097 Glacial



842 State Orange

24

MERKMALE

- Ultra-lightweight ripstop fabric
- 1000-fill Allied RDS®-certified down insulation Certified by Control Union. License Number: CU 848416
- Two zippered hand pockets
- Elastic binding at hood, hem, and cuffs to seal in warmth
- Drawcord hem adjustment
- The Responsible Down Standard certifies down against animal welfare requirements and tracks it from the source to the final product.

- Highly packable design stuffs into its own hand pocket with internal carabiner clip loop

STOFFE

- Körper : Whisperer 5D x 7D Ripstop: 100% Nylon
- Futter : Whisperer 5D x 7D Ripstop: 100% Nylon
- Material Isolierung : 1000-fill RDS®-certified Down

S M L XL XXL	△ 27.5		Standard	
--------------	--------	--	----------	--

GHOST WHISPERER™ HOODY - 2104451



859 Raw Carnelian



007 Volcanic, Foil Grey



010 Black



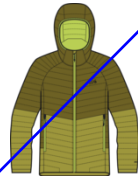
237 Dark Bolt



353 Combat Green



361 Mantis Green



379 Vetiver, Moon Moss



418 Dark Caspian

MERKMALE

- Ultra-lightweight ripstop fabric
- 800-fill RDS®-certified down insulation Certified by Control Union. License Number: CU 848416
- First baffle at both cuffs is filled with synthetic insulation to prevent cuffs from wetting out
- Insulated hood with rear cinch with elastic binding to seal in warmth
- Two zippered hand pockets
- Highly packable design stuffs into its own hand pocket with internal carabiner clip loop
- Drawcord hem adjustment

- The Responsible Down Standard certifies down against animal welfare requirements and tracks it from the source to the final product.

STOFFE

- Körper : Whisperer 10D x 10D Ripstop. Solids: 100% Recycled Nylon; Prints: 100% Nylon
- Futter : Whisperer 10D x 10D Ripstop Solids: 100% Recycled Nylon; Prints: 100% Nylon
- Material Isolierung : 800-fill RDS®-certified Down

S M L XL XXL	△ 27.5		Standard	
--------------	--------	--	----------	--

GHOST WHISPERER™ JACKET - 2104461



859 Raw Carnelian



010 Black



237 Dark Bolt



353 Combat Green



361 Mantis Green



418 Dark Caspian

MERKMALE

- Ultra-lightweight ripstop fabric
- 800-fill RDS®-certified down insulation
Certified by Control Union. License Number:
CU 848416
- First baffle at both cuffs is filled with synthetic insulation to prevent cuffs from wetting out
- Two zippered hand pockets
- Highly packable design stuffs into its own hand pocket with internal carabiner clip loop
- Elastic binding on cuffs to seal in warmth
- Drawcord hem adjustment

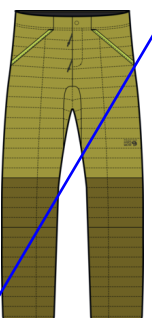
- The Responsible Down Standard certifies down against animal welfare requirements and tracks it from the source to the final product.

STOFFE

- Körper : Whisperer 10D x 10D Ripstop. Solids: 100% Recycled Nylon; Prints: 100% Nylon
- Futter : Whisperer 10D x 10D Ripstop Solids: 100% Recycled Nylon; Prints: 100% Nylon
- Material Isolierung : 800-fill RDS®-certified Down

S M L XL XXL	△ 27.5		Standard	
--------------	--------	--	----------	--

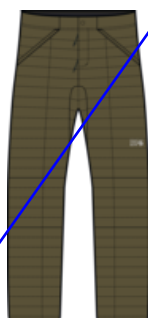
GHOST WHISPERER™ PANT - 2092031



379 Vetiver, Moon Moss



010 Black



353 Combat Green

MERKMALE

- Ultra-lightweight ripstop fabric
- 800-fill RDS®-certified down insulation
Certified by Control Union. License Number:
CU 848416
- Internal drawstring for adjustability
- Snap front closure with zippered fly
- Two hand pockets
- Ankle zips with snap closure
- Highly packable design stows into included stuff sack

- The Responsible Down Standard certifies down against animal welfare requirements and tracks it from the source to the final product.

STOFFE

- Körper : Whisperer 15D Ripstop: 100% Nylon
- Futter : Whisperer 15D Ripstop: 100% Nylon
- Material Isolierung : 800-fill RDS®-certified Down

S M L XL XXL	▲ S R L		Slim	
--------------	---------	--	------	--

STRETCHDOWN™ HOODY - 2104491



418 Dark Caspian



007 Volcanic Heather



010 Black

24



236 Dark Bolt



353 Combat Green

24



838 Dark Copper

MERKMALE

- Exclusive stretch-woven fabric delivers incredible durable stretch
- Insulated hood with elastic binding to seal in warmth
- Two way center front zipper
- Secure zippered chest pocket with media port
- Two secure zippered hand pockets
- Internal drop pocket
- Elastic binding on cuffs to seal in warmth
- Dual lower hem adjusters to seal in warmth

- 700-fill RDS®-certified down Certified by Control Union. License Number: CU 848416 - MOVE TO F2
- The Responsible Down Standard certifies down against animal welfare requirements and tracks it from the source to the final product.

STOFFE

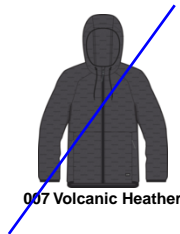
- Körper : 20D Durable Stretch Doubleweave Solids: 87% Nylon, 13% Elastane Heathers: 65% Nylon, 26% Polyester, 9% Elastane
- Material Isolierung : 700-fill RDS®-certified down

S M L XL XXL	△ 28		Standard	
--------------	------	--	----------	--

STRETCHDOWN™ LIGHT FULL ZIP HOODY - 2077751



430 Montauk Blue, Asiatic Blue



007 Volcanic Heather



010 Black



236 Dark Bolt



397 Stone Green, Mantis Green

MERKMALE

- Exclusive stretch-woven fabric delivers incredible stretch with abrasion- and tear-resistance
- 700-fill RDS®-certified down. Certified by Control Union. License Number: CU 848416
- Insulated hood with a front cinch to seal in warmth
- Two secure soft brushed zippered hand pockets
- Elastic binding on cuffs and hem to seal in warmth

- The Responsible Down Standard certifies down against animal welfare requirements and tracks it from the source to the final product.

STOFFE

- Körper : 20D Durable Stretch Doubleweave Solids: 86% Nylon, 14% Elastane Heathers: 62% Nylon, 29% Polyester, 9% Elastane
- Material Isolierung : 700-fill RDS®-certified Down

S M L XL XXL			Standard	
--------------	--	--	----------	--

STRETCHDOWN™ LIGHT JACKET - 2104521



430 Montauk Blue

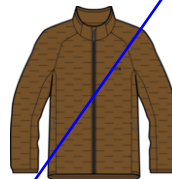
24



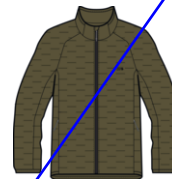
007 Volcanic Heather



010 Black



233 Golden Brown



253 Combat Green



838 Dark Copper

MERKMALE

- Exclusive stretch-woven fabric delivers incredible durable stretch
- Two zipper hand pockets
- Elastic binding on cuffs to seal in warmth
- The most compressible StretchDown version. Packable into right hand stow pocket
- 700-fill RDS®-certified down Certified by Control Union. License Number: CU 848416
- The Responsible Down Standard certifies down against animal welfare requirements and tracks it from the source to the final product.

STOFFE

- Körper : 20D Durable Stretch Doubleweave Solids: 86% Nylon, 14% Elastane Heathers: 62% Nylon, 29% Polyester, 9% Elastane
- Material Isolierung : 700-fill RDS®-certified down

S M L XL XXL	△ 28		Standard	
--------------	------	--	----------	--

STRETCHDOWN™ LIGHT SHACKET - 2003981



430 Montauk Blue



010 Black



367 Badlands Snowdrifts Print

MERKMALE

- Exclusive stretch-woven fabric delivers incredible durable stretch
- Snap-button front
- Two velcro chest pockets
- Two snap hand pockets
- Snap cuffs
- Two internal drop pocket
- Woven MHW logo label
- 700-fill RDS®-certified down Certified by Control Union. License Number: CU 848416

- The Responsible Down Standard certifies down against animal welfare requirements and tracks it from the source to the final product.

STOFFE

- Körper : 20D Durable Stretch Doubleweave Solids: 86% Nylon, 14% Elastane Heathers: 62% Nylon, 29% Polyester, 9% Elastane Prints: 86% Nylon, 14% Elastane
- Material Isolierung : 700-fill RDS®-certified Down. Certified by Control Union. License Number: CU 848416

S M L XL XXL	△ 29.5		Standard	
--------------	--------	--	----------	--

KOR STASIS™ HOODY - 2092151



236 Dark Bolt



010 Black



361 Mantis Green



418 Dark Caspian

MERKMALE

- Lightweight and breathable stretch ripstop Pertex® Quantum Air fabric
- Primaloft® Gold Active is a highly breathable stretch insulation
- Underarm is mapped with highly air-permeable fabric and reduced insulation to optimize breathability in active pursuits
- Three-piece hood with elastic binding and halo cinch to seal in warmth, secure positioning, and improve peripheral visibility
- Secure zippered chest pocket
- Two secure zippered hand pockets
- Highly packable design stuffs into its hand pocket with internal carabiner clip loop

- Stretch cuff for comfort and sealing in warmth

STOFFE

- Körper : Pertex® Quantam Air™ 20D Coated Ripstop: 100% Nylon
- Futter : Pertex® Quantum Air 20D Stretch Ripstop: 59% Recycled Nylon, 41% Nylon
- Material Isolierung : Primaloft® Gold Active 80g (body, upper sleeves) / 60g (hood & lower sleeves): 60% Recycled Polyester, 40% Polyester

S M L XL XXL	△ 28		Standard	
--------------	------	--	----------	--

KOR AIRSHELL™ WARM HOODY - 2092121



353 Combat Green



010 Black



418 Dark Caspian



859 Raw Carnelian

MERKMALE

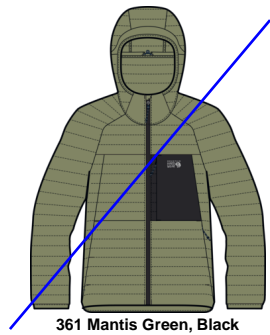
- Lightweight and breathable stretch ripstop Pertex® Quantum Air fabric
- AirMesh lining adds warmth without sacrificing breathability and adds anti-odor protection
- Adjustable hood with elastic binding to seal in warmth
- Two zippered chest pockets
- Two zippered hand pockets
- Two-way center front zipper
- Elastic binding on cuffs to seal in warmth
- Drawcord hem
- Reflective heat transfer MHW logo at chest

STOFFE

- Körper : Pertex® Quantum Air 20D Stretch Ripstop: 59% Recycled Nylon, 41% Nylon
- Futter : AirMesh™ with Anti-Odor Protection: 100% Polyester

S M L XL XXL	△ 28		Standard	
--------------	------	--	----------	--

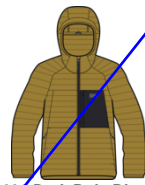
VENTANO™ HOODY - 2092331



361 Mantis Green, Black



010 Black, Volcanic



236 Dark Bolt, Black



418 Dark Caspian, Black



859 Raw Carnelian, Black

MERKMALE

- Ultra-lightweight nylon ripstop fabric
- ThermaCLOud™ AF insulation mimics the lightweight warmth, softness and compressibility of natural goose down
- Insulated hood with rear cinch and elastic binding to seal in warmth
- Secure zippered chest pocket
- Two secure zippered hand pockets
- Highly packable design stuffs into its own hand pocket with internal carabiner clip loop
- Elastic cuffs to seal in warmth
- Dual lower hem adjusters to seal in warmth

STOFFE

- Körper : 15D Nylon Ripstop: 100% Nylon
- Futter : 20D Polyester Micro Ripstop: 100% Recycled Polyester
- Material Isolierung : ThermaCLOud™ AF insulation: 100% Recycled Polyester

S M L XL XXL	△ 27		Standard	
--------------	------	--	----------	--

VENTANO™ JACKET - 2092351



353 Combat Green, Black



010 Black, Volcanic



236 Dark Bolt, Black



418 Dark Caspian, Black

MERKMALE

- Ultra-lightweight nylon ripstop fabric
- ThermaCLOud™ AF insulation mimics the lightweight warmth, softness and compressibility of natural goose down
- Secure zippered chest pocket
- Two secure zippered hand pockets
- Highly packable design stuffs into its own hand pocket with internal carabiner clip loop
- Elastic cuffs to seal in warmth
- Dual lower hem adjusters to seal in warmth

STOFFE

- Körper : 15D Nylon Ripstop: 100% Nylon
- Futter : 20D Polyester Micro Ripstop: 100% Recycled Polyester
- Material Isolierung : ThermaCLOud™ AF insulation: 100% Recycled Polyester

S M L XL XXL	△ 27		Standard	
--------------	------	--	----------	--

POLARTEC® HIGH LOFT™ JACKET - 2104591



091 Black



234 Golden Brown



236 Dark Bolt



353 Combat Green



430 Montauk Blue

MERKMALE

- Classic Polartec® High Loft® fleece fabric
- Integrated stretch fleece fabric on sides, hem and cuffs
- Zippered chest pocket
- Two zippered hand pockets

STOFFE

- Körper : Polartec® High Loft® Fleece: 97% Polyester, 3% Elastane

S M L XL XXL	△ 27.5		Standard	
--------------	--------	--	----------	--

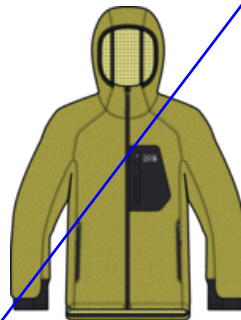
POLARTEC® POWER GRID™ FULL ZIP HOODY - 2104541



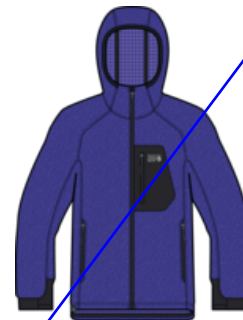
347 Surplus Green Heather



010 Black



356 Moon Moss Heather



503 Klein Blue Heather

MERKMALE

- Three-piece scuba hood for the perfect fit with elastic binding
- Color blocked, zippered chest pocket
- Two zippered hand pockets with brushed mesh lining
- Stretch-knit fabric panels and thumb holes at cuffs
- Elastic binding at hem to seal in warmth
- Reflective heat transfer logo at chest pocket

STOFFE

- Körper : Polartec® Power Grid™: 60% Recycled Polyester, 33% Polyester, 7% Elastane

S M L XL XXL	△ 27.5		Slim	
--------------	--------	--	------	--

MICROCHILL™ FULL ZIP JACKET - 2104701



430 Montauk Blue Heather



007 Volcanic Heather



010 Black



249 Trail Dust Heather



353 Combat Green Heather

MERKMALE

- 100% recycled fleece material
- Two zippered hand pockets with brushed mesh liner
- Raglan sleeve construction for freedom of movement
- MHW embroidered logo

STOFFE

- Körper : Recycled Microfleece: 100% Recycled Polyester

S M L XL XXL	△ 27.5		Slim	
--------------	--------	--	------	--

HICAMP™ FLEECE HOODY - 2104181



022 Stone



010 Black



347 Surplus Green

MERKMALE

- Classic high pile fleece offered in solid and prints
- Three-piece hood with elastic binding at hood opening
- Full-length center front zipper
- Two side entry hand pockets
- Two secure zip chest pockets
- Elastic finishing at cuff and bottom hem
- MHW patch logo at left chest

STOFFE

- Körper : High Pile Fleece: 100% Polyester

S M L XL XXL			Standard	
--------------	--	--	----------	--

SUMMIT GRID™ HALF ZIP - 2105701



838 Dark Copper



010 Black



~~098 Glacial, Black~~



353 Combat Green



444 Asiatic Blue

MERKMALE

- Mock neck for extra coverage
- Center front half zip for venting and easy on/off
- Raglan sleeves for ample mobility
- Drop tail for extra coverage
- MHW patch logo at left chest

STOFFE

- Körper : Grid Fleece: 100% Polyester

S M L XL XXL			Standard	
--------------	--	--	----------	--

PLUSHER™ LONG SLEEVE SHIRT - 1915991



~~203 Ridgeline Ombre Buffalo Check Print~~



012 Black Tatanka Check Print



~~098 Glacial Ombre Buffalo Check Print~~



~~218 Iron Oxide Tatanka Check Print~~



~~233 Golden Brown Ombre Buffalo Check Print~~



320 Dark Pine Ombre Buffalo Check Print



430 Montauk Blue Tatanka Check Print



~~445 Asiatic Blue Ombre Buffalo Check Print~~

MERKMALE

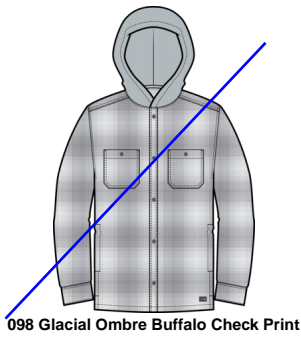
- Soft brushed organic cotton flannel fabric
- Center front button closure
- Two chest pockets with button closure
- Button closure at cuffs
- Fabric is bluesign® approved
- Flag logo at lower left side seam

STOFFE

- Körper : Heavy Brushed Woven Flannel: 100% Organic Cotton

S M L XL XXL	△ 29		Standard	
--------------	------	--	----------	--

PLUSHER™ MICROCHILL LINED SHIRT - 2079671



MERKMALE

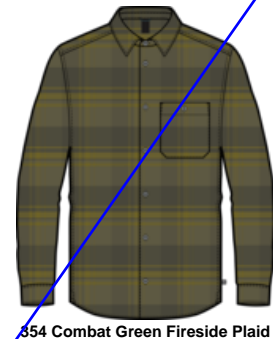
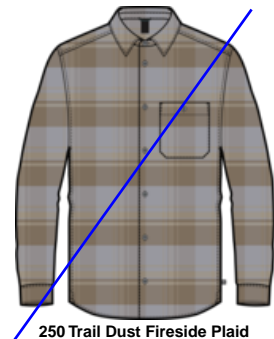
- Soft brushed organic cotton flannel shell fabric lined with recycled micro fleece
- Cotton woven lining with insulated sleeves for warmth and easy layering
- Center front button closure
- Fleece crossover hood
- Two chest pockets with button closure
- Side entry hand pockets
- Fabric is bluesign® approved
- MHW logo label at left bottom hem

STOFFE

- Körper : Heavy Brushed Woven Flannel: 100% Organic Cotton
- Futter : 100% Recycled Polyester Micro Fleece

S M L XL XXL			Standard	
--------------	--	--	----------	--

BIG COTTONWOOD™ LONG SLEEVE SHIRT - 1913591



MERKMALE

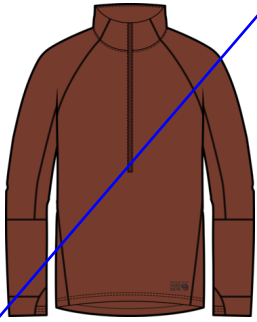
- Center front button closure
- Left chest pocket with button closure
- Button closure at cuffs
- MHW flag logo at lower left side seam

STOFFE

- Körper : Yarn dye plain weave woven: 100% Cotton

S M L XL XXL	△ 29		Standard	
--------------	------	--	----------	--

BUTTER UP™ HALF ZIP - 2084661



218 Iron Oxide



007 Volcanic



010 Black



444 Asiatic Blue

MERKMALE

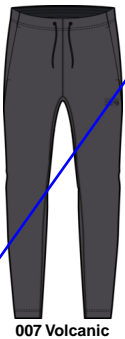
- UPF 50 fabric filters harsh UV rays
- Anti odor and moisture wicking properties
- Half zip for easy venting and on/off
- Low-profile thumbholes
- Fit to be great for layering
- MHW logo heat transfer logo at bottom left hem

STOFFE

- Körper : Brushed Jersey Knit: 85% Polyester, 15% Elastane

S M L XL XXL				
--------------	--	--	--	--

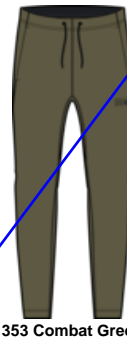
BUTTER UP™ SLIM PANT - 2084681



007 Volcanic



010 Black



353 Combat Green

MERKMALE

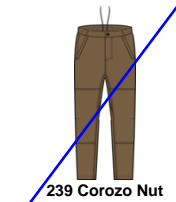
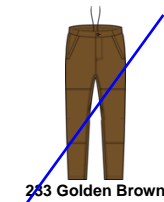
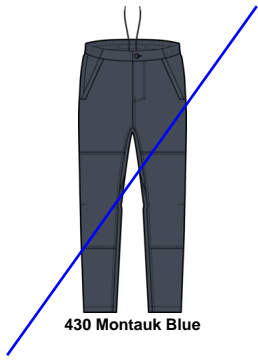
- UPF 50 fabric filters harsh UV rays
- Anti odor and moisture wicking properties
- Easy pull-on elastic waistband
- External drawcord at waist for adjustability
- Side entry hand pockets
- Fit to be great for layering
- MHW logo screen printed at front left thigh

STOFFE

- Körper : Brushed Jersey Knit: 85% Polyester, 15% Elastane

S M L XL XXL	▲ R		Standard	
--------------	-----	--	----------	--

HARDWEAR AP™ CROSSOVER PANT - 2079721



MERKMALE

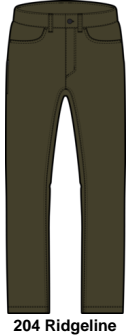
- Elasticated waistband in the back, constructed in the front
- Internal draw cords for adjustability
- Side entry hand pockets
- Invisible zip above right hand pocket
- Secure zip pocket at back right
- Articulation at the knees for ample mobility
- MHW logo label at back right hip

STOFFE

- Körper : Durable Stretch Woven: 97% Nylon, 3% Elastane

30 31 32 33 34 36 38 40 42	▲ 32"		Standard	
----------------------------	-------	--	----------	--

YUMALINO™ LINED PANT - 2095941



MERKMALE

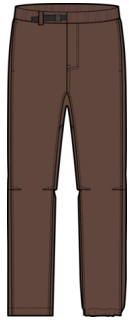
- Durable 4-way stretch shell fabric for freedom of movement with fleece lining for warmth
- PFC free DWR Finish
- 5-pocket styling with belt loops
- Hem cinch for adjustability
- MHW patch logo at back right hip

STOFFE

- Körper : Stretch Woven Shell with Microfleece Lining: 88% Nylon, 12% Elastane
- Futter : Brushed Fleece: 100% Polyester

28 30 31 32 33 34 36 38 40 42 44 46	▲ 30" 32" 34"		Standard	
-------------------------------------	---------------	--	----------	--

ROCKRYDGE™ PANT - 2068041



238 Choss
24



008 Volcanic
24



442 Light Zinc

MERKMALE

- Soft cotton fabric with added stretch for mobility
- Easy elastic pull-on waist
- Adjustable belt at waist
- Side entry hand pockets
- Secure zip pocket at right thigh
- Back right pocket with top entry and Velcro closure
- Adjustable cinch at leg
- Harness compatible
- Articulation at knees
- MHW logo label at back right hip

STOFFE

- Körper : Cotton Woven: 67% Cotton, 25% Nylon, 8% Elastane

28 30 31 32 33 34 36 38 40 42 44 46 S M L XL XXL	▲ 32"		Standard	
---	-------	--	----------	--

MHW LOGO™ PULLOVER HOODY - 2100581



397 Stone Green



010 Black



057 Hardwear Grey Heather



444 Asiatic Blue

MERKMALE

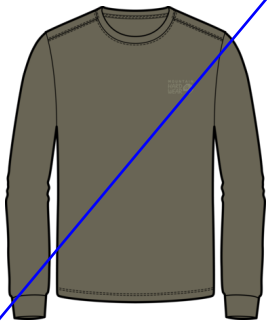
- PVC-free water-based ink
- Center front MHW logo graphic
- External drawcord for adjustability
- Rib on cuffs and bottom hem

STOFFE

- Körper : 67% Cotton, 33% Polyester

S M L XL XXL			Standard	
--------------	--	--	----------	--

MHW BACK LOGO™ LONG SLEEVE - 2100571



397 Stone Green



010 Black



057 Hardwear Grey Heather

MERKMALE

- PVC-free water-based ink
- MHW logo at left chest
- Center back logo graphic

STOFFE

- Körper : 100% Cotton Jersey

XS S M L XL XXL			Standard	
-----------------	--	--	----------	--

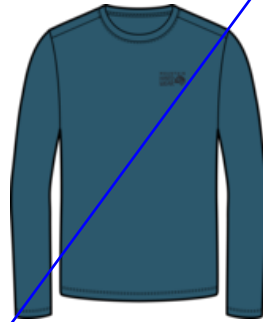
BOX LOGO™ LONG SLEEVE - 2100601



010 Black



057 Hardwear Grey Heather



458 Baltic Blue



513 Blackberry

MERKMALE

- PVC-free, water-based ink
- MHW logo at left chest
- Center back MHW heritage logo

STOFFE

- Körper : 100% Cotton Jersey

XS S M L XL XXL			Standard	
-----------------	--	--	----------	--

BEAR™ SHORT SLEEVE - 2079841



430 Montauk Blue



010 Black



366 Badlands



397 Stone Green

MERKMALE

- PVC-free water-based ink
- MHW logo on left chest
- Center back graphic

STOFFE

- Körper : 100% Cotton Jersey

XS S M L XL XXL			Standard	
-----------------	--	--	----------	--

KOR ALLOY™ CREW - 2077581



037 Sediment



010 Black



170 Talc
24

MERKMALE

- Lightweight and breathable stretch ripstop Pertex® Quantum Air fabric
- Strategically mapped hybrid of AirMesh™ lining and Primaloft® Gold Active for the perfect combination of warmth and breathability
- Underarm is mapped with highly air-permeable fabric to optimize breathability in active pursuits
- Deep center front zip for venting and easy on and off
- Interior secure zippered chest pocket
- Kangaroo style front pocket with interior secure zippered pocket
- Stretch woven cuff to seal in warmth
- Reflective heat transfer MHW logo at chest

STOFFE

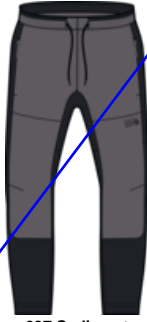
- Körper : Pertex® Quantum Air™ 20D Coated Ripstop (front body and sleeves). 100% Nylon
Pertext® Quantum Air™ 20D Stretch Ripstop (underarms, back panel, and chest pocket). 59% Recycled Nylon, 41% Nylon
- Futter : AirMesh™ 100% Polyester
- Material Isolierung : Primaloft® Gold Active 40g (front body and sleeves). 60% Recycled Polyester, 40% Polyester

XS S M L XL				
-------------	--	--	--	--

KOR ALLOY™ TIGHT - 2077651



010 Black



037 Sediment

24

MERKMALE

- Lightweight and breathable stretch ripstop Pertex® Quantum Air fabric
- Strategically mapped hybrid of AirMesh™ lining and Primaloft® Gold Active for the perfect combination of warmth and breathability
- Strategically mapped stretch woven panels for form-fitting function
- Two secure zippered hand pockets
- Soft elastic waistband with adjustable drawcord for a perfect fit

STOFFE

- Körper : Pertex® Quantum Air™ 20D Coated Ripstop (knees and seat). 100% Nylon | Pertex® Quantum Air™ 20D Stretch Ripstop (upper front and back hip area and waistband). 59% Recycled Nylon, 41% Nylon | 85% polyester, 15% Elastane
- Futter : AirMesh™ 100% Polyester
- Material Isolierung : Primaloft® Gold Active 40g (seat and knees). 60% Recycled Polyester, 40% Polyester

XS S M L XL	▲ R			
-------------	-----	--	--	--

BOUNDARY RIDGE™ GORE-TEX JACKET - 2043201



361 Mantis Green, White Sage

24



037 Sediment, Black



537 Lilac Glow

24

MERKMALE

- Recycled waterproof, breathable 3-layer GORE-TEX® ePE offers reliable protection and comfort
- Helmet-compatible hood with three-way drawcord adjustment
- Underarm zip vents
- Two large secure zippered chest pockets with interior gear organization
- Two secure zippered lower flap pockets
- Pass pocket on the sleeve
- Two way center front zipper
- Internal stretch mesh drop pocket with integrated goggle wipe patch

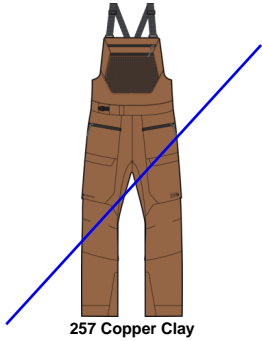
- Internal zip-off removable powder skirt with jacket-to-pant integration
- Adjustable hook and loop cuffs to seal in warmth
- Dual drawcord hem adjustment
- Integrated RECCO® reflector for searchability in emergency situations

STOFFE

- Körper : GORE-TEX® ePE 75D 3L Plain Weave with a Brushed Back: 100% Recycled Polyester

XS S M L XL	△ 29.5		Relaxed	
-------------	--------	--	---------	--

BOUNDARY RIDGE™ GORE-TEX BIB - 2043211



257 Copper Clay



009 Black



361 Mantis Green

24

24

MERKMALE

- Recycled waterproof, breathable 3-layer GORE-TEX® ePE offers reliable protection and comfort
- Traditional bib design with single 3/4 length side zipper for entry
- Stretch-woven upper panel for freedom of movement
- Large secure zippered horizontal chest pocket
- Stretch mesh chest pocket
- Integrated ladder lock adjustable belt to fine tune fit
- Dual side zips for ventilation
- Two secure zippered hand pockets with static webbing gear loop

- Two secure hook and loop flap thigh pockets with internal gear organization
- Jacket-to-pant connector loop
- Internal hem cinch to ensure secure fit around boot
- Internal snow gaiter with boot hook
- Reinforced 600D CORDURA® kick patches that extend around bottom hem
- Integrated RECCO® reflector for searchability in emergency situations

STOFFE

- Körper : GORE-TEX® ePE 75D 3L Plain Weave with a Brushed Back: 100% Recycled Polyester

XS S M L XL	▲ L R S		Relaxed	
-------------	---------	--	---------	--

CLOUD BANK™ GORE-TEX JACKET - 2092451



341 White Sage, Black

24



010 Black, Copper Clay



537 Lilac Glow

24

MERKMALE

- Recycled waterproof, breathable 2-layer GORE-TEX ePE fabric enables durable performance
- Body-mapped insulation provides 80 g at the body and 60 g at the sleeves and hood
- Helmet-compatible hood with three-way drawcord adjustment
- Underarm zip vents with mesh backing expels heat while keeping snow out
- Exterior secure zippered chest pocket
- Four secure zippered hand pockets
- Pass pocket on the sleeve
- Two way center front zipper
- Internal zippered pocket

- Internal stretch mesh drop pocket with integrated goggle wipe patch
- Internal powder skirt with jacket-to-pant integration
- Internal stretch cuffs with thumb loops
- Hook-and-loop adjustable cuffs
- Dual lower hem adjusters to seal in warmth
- Integrated RECCO® reflector for searchability in emergency situations

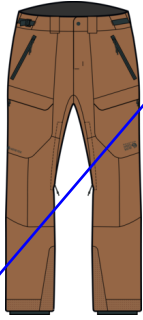
STOFFE

- Körper : GORE-TEX® ePE 150D 2-layer: 100% Recycled Polyester
- Futter : 20D Nylon Taffeta: 100% Nylon

- Material Isolierung : 80 g (body) / 60 g (underarms & hood) Polyester Insulation: 85% Recycled Polyester / 15% Polyester

XS S M L XL	△ 30		Relaxed	
-------------	------	--	---------	--

CLOUD BANK™ GORE-TEX PANT - 2092461



257 Copper Clay



010 Black
48

MERKMALE

- Recycled waterproof, breathable 2-layer GORE-TEX ePE fabric enables durable performance
- Body-mapped insulation provides 60g at the seat and knees and 40g at the legs
- Snap front closure with zippered front fly and belt loops
- Integrated webbing belt with a ladder lock buckle
- Two secure soft brushed zippered hand pockets
- Two secure zippered thigh pockets with internal gear organization
- Inner thigh vents with mesh backing to expel heat while keeping snow out
- Jacket-to-pant attachment loop

- Internal snow gaiter with boot hook
- Expandable ankle width with snap closure at cuffs to accommodate a variety of boots
- Reinforced 600D CORDURA® kickpatches that extend around bottom hem
- Integrated RECCO® reflector for searchability in emergency situations

STOFFE

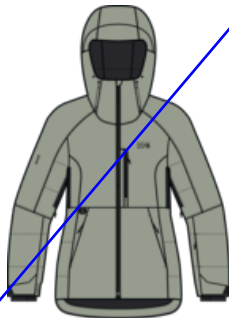
- Körper : GORE-TEX® ePE 150D 2-layer: 100% Recycled Polyester
- Futter : 20D Nylon Taffeta: 100% Nylon
- Material Isolierung : 60 g (seat and knees) / 40 g (legs) Polyester Insulation: 85% Recycled Polyester/ 15% Polyester

XS S M L XL	▲ L R S		Relaxed	
-------------	---------	--	---------	--

POWDER MAVEN™ DOWN JACKET - 2092931



642 Smoky Quartz



342 White Sage



513 Blackberry

MERKMALE

- 2-layer windproof shell material provides breathable weather protection
- 650-fill RDS®-certified down insulation
- Helmet-compatible hood with three-way drawcord adjustment
- Underarm zip vents with mesh backing to expel heat while keeping snow out
- Secure zippered chest pocket
- Two secure zippered hand pockets
- Pass pocket on the sleeve
- Two way center front zipper
- Internal secure zippered pocket
- Internal drop pocket

- Internal powder skirt with jacket to pant integration
- Internal stretch cuffs with thumb loops
- Hook-and-loop adjustable cuffs
- Dual lower hem adjusters to seal in warmth
- Integrated RECCO® reflector for searchability in emergency situations

STOFFE

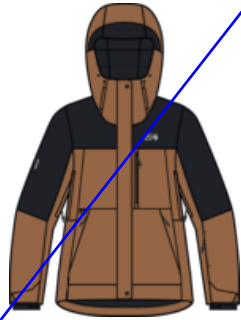
- Körper : Dry.Q® 150D Polyester Plainweave 2-layer: 100% Polyester
- Futter : 20D Nylon Taffeta: 100% Nylon
- Material Isolierung : 650-fill RDS®-certified down

XS S M L XL	△ 29		Relaxed	
-------------	------	--	---------	--

POWDER MAVEN™ JACKET - 2092901



643 Smoky Quartz Vapors Print



257 Copper Clay, Black



341 White Sage, Mantis Green, Black



435 Element, Black

MERKMALE

- 2-layer waterproof Dry.Q® fabric provides breathable weather protection
- Body-mapped insulation provides 80 g at the body and 60 g at the sleeves and hood
- Helmet-compatible hood with three-way drawcord adjustment
- Underarm zip vents with mesh backing expels heat while keeping snow out
- Secure zippered chest pocket
- Two secure zippered hand pockets
- Pass pocket on the sleeve
- Two way center front zipper
- Internal secure zippered pocket
- Internal drop pocket

- Internal powder skirt with jacket to pant integration
- Internal stretch cuffs with thumb loops
- Hook-and-loop adjustable cuffs
- Dual lower hem adjusters to seal in warmth
- Integrated RECCO® reflector for searchability in emergency situations

STOFFE

- Körper : Dry.Q® 150D Polyester Plainweave 2-layer: 100% Polyester
- Futter : 20D Nylon Taffeta: 100% Nylon
- Material Isolierung : 80 g (body) / 60 g (sleeves & hood) Polyester Insulation: 85% Recycled Polyester / 15% Polyester

XS S M L XL	△ 28		Relaxed	
-------------	------	--	---------	--

POWDER MAVEN™ BIB - 2092891



361 Mantis Green



435 Element



513 Blackberry

MERKMALE

- 2-layer waterproof Dry.Q® fabric provides breathable weather protection
- Body-mapped insulation provides 60g at the thighs and 40g at the legs
- Adjustable suspender with a partial stretch-woven upper for ease of movement and breathability
- Zippered center front opening allows for easy on and off
- Half length water resistant side zips allow for maximum venting
- Two secure zippered chest pockets
- Two secure soft brush zippered hand pockets
- Two secure zippered thigh pockets

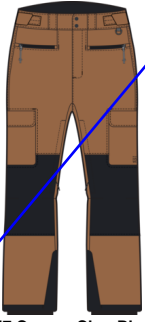
- Jacket-to-pant attachment loop
- Internal snow gaiter with boot hook
- Reinforced 600D CORDURA® kickpatches that extend around bottom hem
- Integrated RECCO® reflector for searchability in emergency situations

STOFFE

- Körper : Dry.Q® 150D Polyester Plainweave 2-layer: 100% Polyester
- Futter : 20D Nylon Taffeta: 100% Nylon
- Material Isolierung : 60 g (thighs & seat) / 40 g (legs) Polyester Insulation: 85% Recycled Polyester / 15% Polyester

XS S M L XL	▲ L R S			
-------------	---------	--	--	--

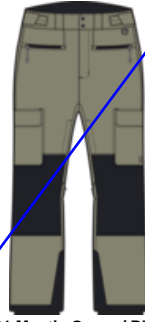
POWDER MAVEN™ PANT - 2077601



257 Copper Clay, Black



010 Black



361 Mantis Green / Black

MERKMALE

- 2-layer waterproof Dry.Q® fabric provides breathable weather protection
- Low profile waist with adjustable waist hook and loop tabs
- Snap front closure with zippered fly
- Two zippered soft-brushed hand pockets
- Hook-and-loop flapped thigh pockets
- Inner thigh vents with mesh backing to expel heat while keeping snow out
- Jacket-to-pant attachment loop
- Internal snow gaiter with boot hook

- Reinforced 600D CORDURA® kick patches that extend around bottom hem
- Integrated RECCO® reflector for searchability in emergencies

STOFFE

- Körper : Dry.Q® 150D 100% Polyester Plainweave 2-layer
- Futter : 20D Nylon Taffeta: 100% Nylon

XS S M L XL	▲ L R S		Relaxed	
-------------	---------	--	---------	--

STORM WHISPERER™ INSULATED JACKET - 2077711



010 Black



314 Jack Pine



513 Blackberry

24

MERKMALE

- Pertex® Shield provides lightweight waterproof protection while remaining highly breathable and lined with ultra-lightweight ripstop fabric
- 800-fill RDS®-certified down insulation
- Fully insulated adjustable hood with rear cinch
- Water resistant two-way center front zipper
- Underarm zip vents with mesh backing
- Two secure zippered hand pockets
- Interior secure zippered pocket
- Interior stretch mesh drop pocket
- Stretch-knit cuffs to seal in warmth
- Elastic bound hem to seal in warmth

- Certified by Control Union. License Number: CU 848416

STOFFE

- Körper : Pertex® Shield 20D Ripstop 2-layer, 100% Recycled Nylon
- Futter : Whisperer 10D x 10D Ripstop
- Material Isolierung : 800-fill RDS®-certified Down. Certified by Control Union. License Number: CU 848416

XS S M L XL			Standard	
-------------	--	--	----------	--

STRETCH OZONIC™ JACKET - 2093471



340 Botanic, Dark Marsh



010 Black



383 Light Sun



407 Dark Zinc Frequency Print



568 Wisteria Frequency Print

MERKMALE

- Dry.Q 2.5-layer stretch ripstop fabric is super soft and quiet
- Adjustable hood
- Underarm zip vents
- Zippered chest pocket
- Two zippered hand pockets
- Highly packable design stuffs into its own hand pocket with internal carabiner clip loop
- Hook-and-loop adjustable cuffs
- Dual drawcord hem adjustment

STOFFE

- Körper : Dry.Q® 50D Stretch Ripstop 2.5-layer: 100% Recycled Polyester

XS S M L XL	△ 28		Slim	
-------------	------	--	------	--

STRETCH OZONIC™ PANT - 2093481



010 Black

MERKMALE

- Dry.Q 2.5-layer stretch ripstop fabric is super soft and quiet
- Elastic waistband with snap front closure and zippered fly
- Drawcord adjustment at waist
- Front zippered pocket
- Side zips the are 3/4 of the pants for easy on and off
- Elastic cuffs with snap closure

STOFFE

- Körper : Dry.Q® 50D Stretch Ripstop 2.5-layer: 100% Recycled Polyester

XS S M L XL	▲ L R S		Standard	
-------------	---------	--	----------	--

CHOCKSTONE™ ALPINE HOODED JACKET - 2077731



010 Black



417 Blue Slate

MERKMALE

- Four-way stretch Chockstone™ doubleweave fabric with high abrasion resistance
- Helmet-compatible hood with three-way drawcord adjustment for secure positioning while moving
- Laminated anti-snap draft flap with chin guard
- Two-way center front zipper
- Two harness-compatible secure zippered hand pockets
- Two exterior secure zippered chest pockets
- Two interior stretch mesh drop pockets
- Stuffs into hand pocket with carabiner clip loop

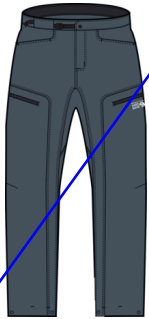
- Hook-and-loop adjustable cuffs to seal in warmth
- Dual lower hem adjusters to seal out weather

STOFFE

- Körper : Chockstone™ Double Weave Soft Shell: 92% Nylon, 8% Elastane

XS S M L XL			Slim	
-------------	--	--	------	--

CHOCKSTONE™ ALPINE PANT - 2092441



417 Blue Slate



010 Black

MERKMALE

- 4-way-stretch, double-weave fabric with high abrasion resistance
- Snap front closure and zippered fly
- Fully adjustable waist with integrated belt customize your comfort
- Enhanced knee articulation enables full range of motion
- Two hand pockets
- Two zippered thigh pockets with internal elastic bands and loops for tool organization
- Cuff cinch with lace hook secures to shoelaces and keeps from hiking up the calf

STOFFE

- Körper : Chockstone™ Double Weave Soft Shell: 92% Nylon, 8% Elastane

XS S M L XL	▲ L R S		Slim	
-------------	---------	--	------	--

CHOCKSTONE™ ALPINE LT HOODED JACKET - 2063331



010 Black



450 Blue Slate



503 Klein Blue

MERKMALE

- Four-way stretch, Chockstone™ LT Double Weave fabric with high abrasion resistance
- Helmet-compatible hood with three-way drawcord adjustment for secure positioning throughout movement
- Laminated anti-snap draft flap with chin guard
- Two-way center front zipper
- Two harness compatible, zippered hand pockets
- Internal zippered pocket
- Internal drop pocket
- Highly packable design stuffs into hand pocket with carabiner clip loop

- Elasticized cuffs
- Dual lower hem adjusters to seal out weather

STOFFE

- Körper : Chockstone™ LT Double Weave Soft Shell. 88% Nylon, 12% Elastane

XS S M L XL	△ 28		Slim	
-------------	------	--	------	--

CHOCKSTONE™ ALPINE LT PANT - 2063361



010 Black



417 Blue Slate

MERKMALE

- Four-way stretch, Chockstone™ LT Double Weave fabric with high abrasion resistance
- Snap front closure and zippered fly
- Fully adjustable waist with integrated belt to customize your fit
- Enhanced knee articulation enables full range of motion
- Two secure zippered hand pockets
- Secure zippered thigh pocket with internal elastic band and loop for gear organization
- Hem cinch and eyelets at cuffs

STOFFE

- Körper : Chockstone™ LT Double Weave Soft Shell. 88% Nylon, 12% Elastane

XS S M L XL	▲ L R S		Slim	
-------------	---------	--	------	--

ABSOLUTE ZERO™ SUIT - 1939661



742 State Orange



MERKMALE

- Box wall baffle construction with 800-fill RDS-certified down Certified by Control Union. License Number: CU 848416
- 6-slider watertight rainbow rear-zip for easy on/off
- Oxygen mask compatible collar with stow feature
- Low profile, insulated fixed hood with drawcord for quick adjustments
- Pertex® 50D reinforced panels at elbows, knees, seat, and hem
- Extended Underarm vent zippers

- Internal suspender system with sternum adjustments
- The Responsible Down Standard certifies down against animal welfare requirements and tracks it from the source to the final product.

STOFFE

- Körper : Pertex® 20D Diamond Fuse Ripstop Pertex® 50D Reinforced Panels. 100% Nylon
- Futter : Z-Grav 15D Ripstop. 100% Nylon
- Material Isolierung : 800-fill RDS®-certified Down. Certified by Control Union. License Number: CU 848416

XS S M L XL	△ 28		Relaxed	
-------------	------	--	---------	--

GHOST WHISPERER™ UL HOODY - 2092701



010 Black



378 Citron Glow



417 Blue Slate

MERKMALE

- Ultra-lightweight ripstop fabric
- 1000-fill Allied RDS®-certified down insulation Certified by Control Union. License Number: CU 848416
- Two zippered hand pockets
- Elastic binding at hood, hem, and cuffs to seal in warmth
- Drawcord hem adjustment
- The Responsible Down Standard certifies down against animal welfare requirements and tracks it from the source to the final product.

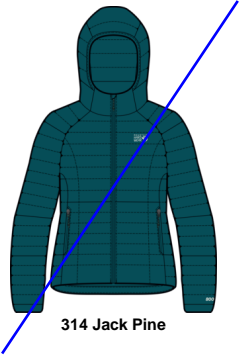
- Highly packable design stuffs into its own hand pocket with internal carabiner clip loop

STOFFE

- Körper : Whisperer 5D x 7D Ripstop: 100% Nylon
- Futter : Whisperer 5D x 7D Ripstop: 100% Nylon
- Material Isolierung : 1000-fill RDS®-certified Down

XS S M L XL	△ 26		Slim	
-------------	------	--	------	--

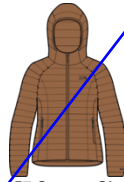
GHOST WHISPERER™ HOODY - 2104731



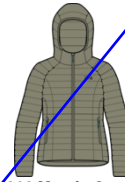
314 Jack Pine



090 Black



257 Copper Clay



362 Mantis Green



378 Citron Glow



401 Outer Dark



513 Blackberry

24

MERKMALE

- Ultra-lightweight ripstop fabric
- 800-fill RDS®-certified down insulation
Certified by Control Union. License Number:
CU 848416
- First baffle at both cuffs is filled with synthetic insulation to prevent cuffs from wetting out
- Insulated hood with rear cinch with elastic binding to seal in warmth
- Two zippered hand pockets
- Highly packable design stuffs into its own hand pocket with internal carabiner clip loop
- Drawcord hem adjustment

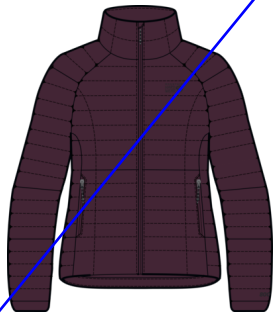
- The Responsible Down Standard certifies down against animal welfare requirements and tracks it from the source to the final product.

STOFFE

- Körper : Whisperer 10D x 10D Ripstop. Solids: 100% Recycled Nylon; Prints: 100% Nylon
- Futter : Whisperer 10D x 10D Ripstop Solids: 100% Recycled Nylon; Prints: 100% Nylon
- Material Isolierung : 800-fill RDS®-certified Down

XS S M L XL	△ 26		Slim	
-------------	------	--	------	--

GHOST WHISPERER™ JACKET - 2104741



513 Blackberry



010 Black



257 Copper Clay



314 Jack Pine



361 Mantis Green

24

MERKMALE

- Ultra-lightweight ripstop fabric
- 800-fill RDS®-certified down insulation
Certified by Control Union. License Number:
CU 848416
- First baffle at both cuffs is filled with synthetic insulation to prevent cuffs from wetting out
- Two zippered hand pockets
- Highly packable design stuffs into its own hand pocket with internal carabiner clip loop
- Elastic binding on cuffs to seal in warmth
- Drawcord hem adjustment

- The Responsible Down Standard certifies down against animal welfare requirements and tracks it from the source to the final product.

STOFFE

- Körper : Whisperer 10D x 10D Ripstop. Solids: 100% Recycled Nylon; Prints: 100% Nylon
- Futter : Whisperer 10D x 10D Ripstop Solids: 100% Recycled Nylon; Prints: 100% Nylon
- Material Isolierung : 800-fill RDS®-certified Down

XS S M L XL	△ 26		Slim	
-------------	------	--	------	--

GHOST WHISPERER™ PANT - 2092691



314 Jack Pine



010 Black



257 Copper Clay



356 Moon Moss, Blackberry

MERKMALE

- Ultra-lightweight ripstop fabric
- 800-fill RDS®-certified down insulation
Certified by Control Union. License Number:
CU 848416
- Internal drawstring for adjustability
- Snap front closure with zippered fly
- Two hand pockets
- Ankle zips with snap closure
- Highly packable design stows into included
stuff sack

- The Responsible Down Standard certifies down
against animal welfare requirements and tracks
it from the source to the final product.

STOFFE

- Körper : Whisperer 15D Ripstop: 100% Nylon
- Futter : Whisperer 15D Ripstop: 100% Nylon
- Material Isolierung : 800-fill RDS®-certified
Down

XS S M L XL	▲ L R S		Slim	
-------------	---------	--	------	--

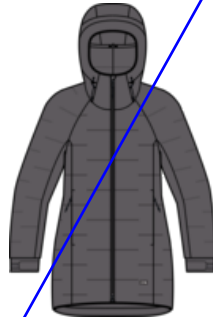
STRETCHDOWN™ PARKA - 2077691



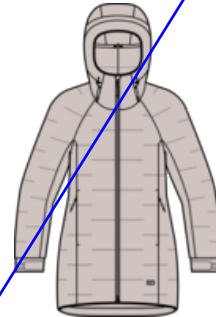
513 Blackberry



010 Black



037 Sediment



170 Talc

MERKMALE

- Exclusive stretch-woven fabric delivers
incredible stretch with abrasion- and tear-
resistance
- 700-fill RDS®-certified down insulation
- Helmet-compatible hood with three-way
drawcord adjustment
- Two-way center front zipper for extra mobility
- Two interior secure zippered chest pockets
- Two secure soft brushed zippered hand pockets
- Hook-and-loop on cuffs to seal in warmth
- Dual drawcord hem adjustment to seal in
warmth

- Hem cinch ends in hand pockets with clip for
added security
- The Responsible Down Standard certifies down
against animal welfare requirements and tracks
it from the source to the final product.
- Certified by Control Union. License Number:
CU 848416

STOFFE

- Körper : 20D Durable Stretch Doubleweave:
86% Nylon, 14% Elastane
- Material Isolierung : 700-fill RDS®-certified
Down

XS S M L XL	△ 33		Standard	
-------------	------	--	----------	--

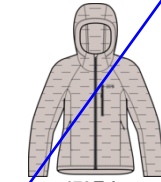
STRETCHDOWN™ HOODY - 2104781



004 Dark Storm Heather



010 Black



170 Talc



341 White Sage

24



401 Outer Dark



513 Blackberry

24

MERKMALE

- Exclusive stretch-woven fabric delivers incredible durable stretch
- Insulated hood with elastic binding to seal in warmth
- Two way center front zipper
- One secure zip chest pocket with media port
- Two zipper hand pockets
- Internal drop pocket
- Elastic binding on cuffs to seal in warmth
- Dual drawcord hem adjustment

- 700-fill RDS®-certified down Certified by Control Union. License Number: CU 848416 - MOVE TO F2
- The Responsible Down Standard certifies down against animal welfare requirements and tracks it from the source to the final product.

STOFFE

- Körper : 20D Durable Stretch Doubleweave Solids: 87% Nylon, 13% Elastane Heathers: 65% Nylon, 26% Polyester, 9% Elastane
- Material Isolierung : 700-fill RDS®-certified Down

XS S M L XL	△ 26		Standard	
-------------	------	--	----------	--

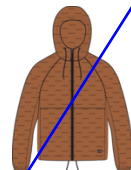
STRETCHDOWN™ LIGHT FULL ZIP HOODY - 2077681



444 Asiatic Blue, Montauk Blue



010 Black



257 Copper Clay



341 White Sage, Mantis Green



513 Blackberry

MERKMALE

- Exclusive stretch-woven fabric delivers incredible stretch with abrasion- and tear-resistance
- 700-fill RDS®-certified down
- Insulated hood with a front cinch to seal in warmth
- Two secure soft brushed zippered hand pockets
- Elasticized cuffs to seal in warmth
- Dual drawcord hem adjustment to seal in warmth

- The Responsible Down Standard certifies down against animal welfare requirements and tracks it from the source to the final product.
- Certified by Control Union. License Number: CU 848416

STOFFE

- Körper : 20D Durable Stretch Doubleweave Solids: 86% Nylon, 14% Elastane Heathers: 62% Nylon, 29% Polyester, 9% Elastane Prints: 86% Nylon, 14% Elastane
- Material Isolierung : 700-fill RDS®-certified Down

XS S M L XL			Standard	
-------------	--	--	----------	--

STRETCHDOWN™ LIGHT JACKET - 2104801



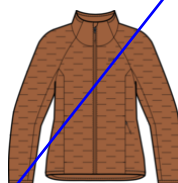
341 White Sage



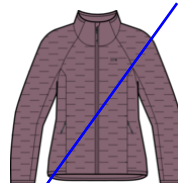
004 Dark Storm Heather



010 Black



257 Copper Clay



534 Dark Daze

MERKMALE

- Exclusive stretch-woven fabric delivers incredible durable stretch
- Two zipper hand pockets
- Elastic binding on cuffs to seal in warmth
- The most compressible StretchDown version. Packable into right hand stow pocket
- 700-fill RDS®-certified down Certified by Control Union. License Number: CU 848416
- The Responsible Down Standard certifies down against animal welfare requirements and tracks it from the source to the final product.

STOFFE

- Körper : 20D Durable Stretch Doubleweave Solids: 86% Nylon, 14% Elastane Heathers: 62% Nylon, 29% Polyester, 9% Elastane
- Material Isolierung : 700-fill RDS®-certified Down

XS S M L XL	△ 26.5		Standard	
-------------	--------	--	----------	--

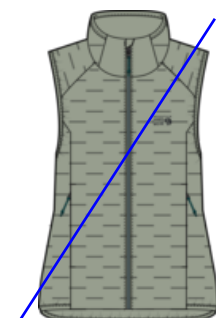
STRETCHDOWN™ LIGHT VEST - 2104811



257 Copper Clay



010 Black



341 White Sage



534 Dark Daze

MERKMALE

- Exclusive stretch-woven fabric delivers incredible durable stretch
- Two zippered hand pockets
- Elastic binding on arm holes to seal in warmth
- Drawcord hem adjustment
- The most compressible StretchDown version. Packable into right hand stow pocket
- 700-fill RDS®-certified down Certified by Control Union. License Number: CU 848416

- The Responsible Down Standard certifies down against animal welfare requirements and tracks it from the source to the final product.

STOFFE

- Körper : 20D Durable Stretch Doubleweave Solids: 86% Nylon, 14% Elastane Heathers: 62% Nylon, 29% Polyester, 9% Elastane
- Material Isolierung : 700-fill RDS®-certified Down

XS S M L XL	△ 24.5		Standard	
-------------	--------	--	----------	--

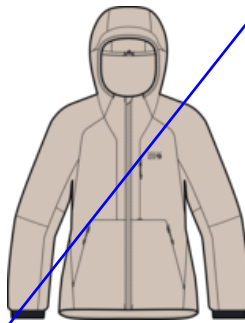
KOR STASIS™ HOODY - 2092751



314 Jack Pine



010 Black



170 Talc



537 Lilac Glow

MERKMALE

- Lightweight and breathable stretch ripstop Pertex® Quantum Air fabric
- Primaloft® Gold Active is a highly breathable stretch insulation
- Underarm is mapped with highly air-permeable fabric and reduced insulation to optimize breathability in active pursuits
- Three-piece hood with elastic binding and halo cinch to seal in warmth, secure positioning, and improve peripheral visibility
- Secure zippered chest pocket
- Two secure zippered hand pockets
- Highly packable design stuffs into its hand pocket with internal carabiner clip loop

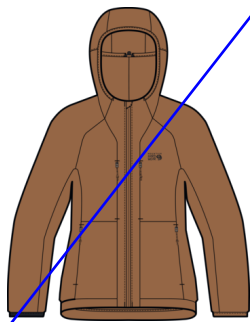
- Stretch cuff for comfort and sealing in warmth

STOFFE

- Körper : Pertex® Quantam Air™ 20D Coated Ripstop: 100% Nylon
- Futter : Pertex® Quantum Air 20D Stretch Ripstop: 59% Recycled Nylon, 41% Nylon
- Material Isolierung : Primaloft® Gold Active 80g (body, upper sleeves) / 60g (hood, lower sleeves): 60% Recycled Polyester, 40% Polyester

XS S M L XL	△ 26		Standard	
-------------	------	--	----------	--

KOR AIRSHELL™ WARM HOODY - 2092731



257 Copper Clay



010 Black



314 Jack Pine



513 Blackberry

24

MERKMALE

- Lightweight and breathable stretch ripstop Pertex® Quantum Air fabric
- AirMesh lining adds warmth without sacrificing breathability and adds anti-odor protection
- Adjustable hood with elastic binding to seal in warmth
- Two zippered chest pockets
- Two zippered hand pockets
- Two-way center front zipper
- Elastic binding on cuffs to seal in warmth
- Drawcord hem
- Reflective heat transfer MHW logo at chest

STOFFE

- Körper : Pertex® Quantum Air 20D Stretch Ripstop: 59% Recycled Nylon, 41% Nylon
- Futter : AirMesh™ with Anti-Odor Protection: 100% Polyester

XS S M L XL	△ 27		Standard	
-------------	------	--	----------	--

VENTANO™ HOODY - 2092861



010 Black



257 Copper Clay



361 Mantis Green / Black



513 Blackberry / Black

MERKMALE

- Ultra-lightweight nylon ripstop fabric
- ThermaCLOud™ AF insulation mimics the lightweight warmth, softness and compressibility of natural goose down
- Insulated hood with rear cinch with elastic binding to seal in warmth
- Secure zippered chest pocket
- Two secure zippered hand pockets
- Highly packable design stuffs into its own hand pocket with internal carabiner clip loop
- Elastic cuffs to seal in warmth
- Dual lower hem adjusters to seal in warmth

STOFFE

- Körper : 15D Nylon Ripstop: 100% Nylon
- Futter : 20D Polyester Micro Ripstop: 100% Recycled Polyester
- Material Isolierung : ThermaCLOud™ AF insulation: 100% Recycled Polyester

XS S M L XL	△ 25.5		Standard	
-------------	--------	--	----------	--

POLARTEC® HIGH LOFT™ JACKET - 2104841



537 Lilac Glow



090 Black



170 Talc



361 Mantis Green



513 Blackberry

MERKMALE

- Classic Polartec® High Loft® fleece fabric
- Integrated stretch fleece fabric on sides, hem and cuffs
- Zippered chest pocket
- Two zippered hand pockets

STOFFE

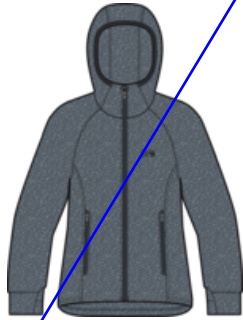
- Körper : Polartec® High Loft® Fleece: 97% Polyester, 3% Elastane

XS S M L XL	△ 26.5		Standard	
-------------	--------	--	----------	--

SENDURA™ HOODY - 2104861



010 Black



056 Foil Grey Heather



314 Jack Pine Heather



513 Blackberry

MERKMALE

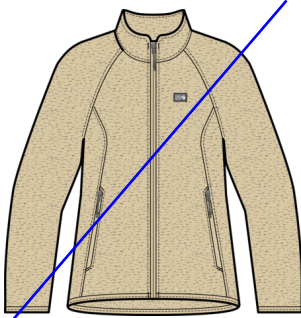
- Fleece fabric is super soft, cozy, and offers great performance stretch
- Smooth face fabric is easy to layer over
- Elastic binding at cuffs, hem, and hood
- Full-length center front zip
- Two secure zippered hand pockets
- Two internal drop pockets

STOFFE

- Körper : Stretch Performance Fleece: 94% Recycled Polyester, 6% Elastane

XS S M L XL	△ 27			
-------------	------	--	--	--

MICROCHILL™ FULL ZIP JACKET - 2104881



284 Wild Oyster Heather



010 Black



097 Glacial Heather



361 Mantis Green Heather



390 Python Green



401 Outer Dark Heather



513 Blackberry Heather

MERKMALE

- 100% recycled fleece material
- Two zippered hand pockets with brushed mesh liner
- Raglan sleeve construction for freedom of movement
- MHW embroidered logo

STOFFE

- Körper : Recycled Microfleece: 100% Recycled Polyester

XS S M L XL	△ 27		Standard	
-------------	------	--	----------	--

HICAMP™ PRINTED PULLOVER - 2104301



431 Montauk Blue Ridge Stripe Print 285 Wild Oyster Ridge Stripe Print 342 White Sage Forests Floor Print

MERKMALE

- Classic high pile fleece offered in solid and prints
- Mock neck for extra coverage
- Half zip for easy venting and on/off
- Secure zip kangaroo pocket
- Elastic finish at cuffs and bottom hem
- MHW patch logo at left chest

STOFFE

- Körper : High Pile Fleece: 100% Polyester

XS S M L XL			Standard	
-------------	--	--	----------	--

SUMMIT GRID™ HALF ZIP - 2105641



513 Blackberry, Python Green

010 Black

284 Wild Oyster

341 White Sage

390 Python Green, Element

MERKMALE

- Three-piece fitted scuba hood with adjustable cinch
- Center front half zip for easy venting and on/off
- Raglan sleeves for ample mobility
- Kangaroo pocket
- MHW patch logo at bottom left hem

STOFFE

- Körper : Grid Fleece: 100% Polyester

XS S M L XL			Standard	
-------------	--	--	----------	--

PLUSHER™ LONG SLEEVE SHIRT - 2104331



445 Asiatic Blue Ombre Buffalo Check



010 Black Ombre Buffalo Check



097 Glacial Ombre Buffalo Check



342 White Sage Ombre Buffalo Check



534 Dark Daze Buffalo Ombre Check

MERKMALE

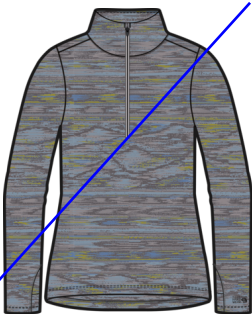
- Full button down at center front
- Two chest pockets with button closure
- Buttons at both cuffs for adjustability
- Hidden secure zip pocket at left side near bottom hem- perfect size for ID, credit card, and/or cash
- 100% organic cotton
- Flag logo at lower left side seam
- Body fabric is bluesign® approved

STOFFE

- Körper : Organic Heavy Flannel: 100% Organic Cotton

XS S M L XL	△ 27		Standard	
-------------	------	--	----------	--

BUTTER UP™ HALF ZIP - 2084621



435 Element Stria Print



010 Black



417 Blue Slate



513 Blackberry



537 Lilac Glow

MERKMALE

- UPF 50 fabric filters harsh UV rays
- Anti odor and moisture wicking properties
- Half zip for easy venting and on/off
- Low-profile thumbholes
- Fit to be great for layering
- Printed and solid options
- MHW logo heat transfer logo at left cuff

STOFFE

- Körper : Brushed Jersey Knit: 85% Polyester, 15% Elastane

XS S M L XL				
-------------	--	--	--	--

BUTTER UP™ TIGHT - 2084641



514 Blackberry Forests Floor Print



010 Black



341 White Sage
Snowdrifts Print



417 Blue Slate



513 Blackberry

MERKMALE

- UPF 50 fabric filters harsh UV rays
- Anti odor and moisture wicking properties
- Fit to be great for layering
- Printed and solid options
- MHW logo heat transfer logo at back left hip

STOFFE

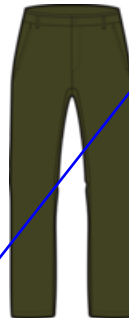
- Körper : Brushed Jersey Knit: 85% Polyester, 15% Elastane

XS S M L XL	▲ R			
-------------	-----	--	--	--

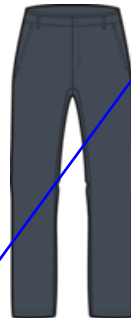
YUMALINA™ LINED PANT - 2095451



010 Black



319 Dark Pine



430 Montauk Blue



439 Abyss

MERKMALE

- Durable 4-way stretch shell fabric for freedom of movement with fleece lining for warmth
- PFC free DWR Finish
- Fleece lining for extra warmth
- Secure zip pocket at right thigh
- MHW patch logo at back right hip

STOFFE

- Körper : Stretch Woven Shell with Microfleece Lining: 88% Nylon, 12% Elastane
- Futter : 100% Polyester

0 2 4 6 8 10 12 14 16	▲ R		Standard	
-----------------------	-----	--	----------	--

MHW LOGO™ PULLOVER CREW - 2004341



537 Lilac Glow

010 Black

170 Talc

513 Blackberry

MERKMALE

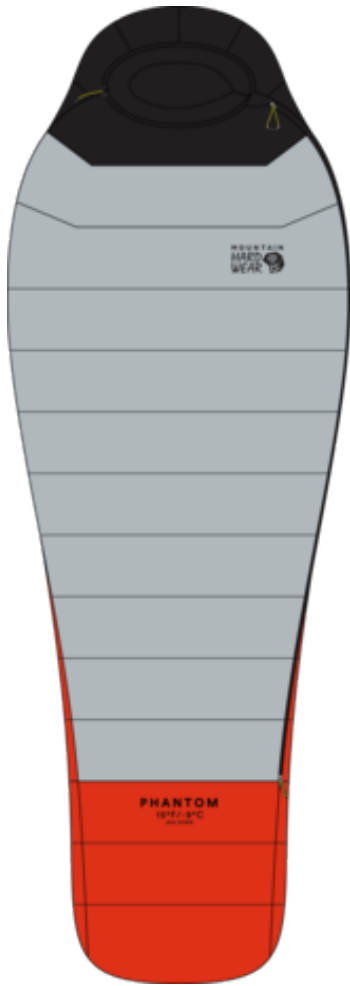
- Embroidered logo at left chest
- Rib on collar, cuffs and bottom hem

STOFFE

- Körper : Polyester Fleece: 67% Cotton, 33% Polyester

XS S M L XL	△ 25		Standard	
-------------	------	--	----------	--

PHANTOM™ 15F/-9C LONG - 2063663



097 Glacial

MERKMALE

- High-lofting, RDS®-certified 800-fill down insulation
- 10-denier recycled shell is extremely light and highly compressible
- Lightweight but durable #5 zipper with anti-snap for easy entry and exit
- 15-denier nylon ripstop lining for added durability and comfort
- Functional black lining retains warmth and dries out faster
- Taped construction around zipper to reduce snagging and minimize weight
- Contoured footbox follows natural foot position for maximum warmth and comfort
- Draft collar blocks the escape of warm air from inside the bag

- Angled horizontal baffles near hood minimize down migration
- Mummy cut efficiently maximizes warmth-to-weight ratio
- Four-chamber hood design maintains even loft around head for consistent warmth
- Lightweight nylon compression sack and mesh storage sack included
- Two-way zipper allows for easy ventilation
- Down-filled face gasket comfortably blocks drafts at the hood opening
- External hood cinch for adjustability
- Glow in the dark, reflective zipper pull
- Durable water-repellent finish
- Left-hand and right-hand zippers available for zip-together functionality
- Certified by Control Union. License Number: CU 848416

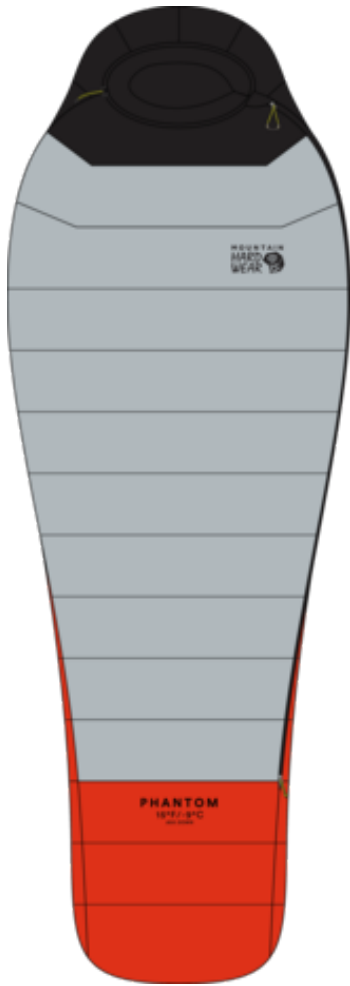
- The Responsible Down Standard certifies down against animal welfare requirements and tracks it from the source to the final product.

STOFFE

- Futter : 15D Nylon Ripstop 100% Nylon
- Obermaterial : 10D Recycled Nylon Ghost Ripstop 26 g/m² 100% Recycled Nylon

LNG	▲ LH RH		Long-Sleep Bags	
-----	---------	--	-----------------	--

PHANTOM™ 15F/-9C REG - 2063661



097 Glacial

MERKMALE

- High-lofting, RDS®-certified 800-fill down insulation
- 10-denier recycled shell is extremely light and highly compressible
- Lightweight but durable #5 zipper with anti-snap for easy entry and exit
- 15-denier nylon ripstop lining for added durability and comfort
- Functional black lining retains warmth and dries out faster
- Taped construction around zipper to reduce snagging and minimize weight
- Contoured footbox follows natural foot position for maximum warmth and comfort
- Draft collar blocks the escape of warm air from inside the bag

- Angled horizontal baffles near hood minimize down migration
- Mummy cut efficiently maximizes warmth-to-weight ratio
- Four-chamber hood design maintains even loft around head for consistent warmth
- Lightweight nylon compression sack and mesh storage sack included
- Two-way zipper allows for easy ventilation
- Down-filled face gasket comfortably blocks drafts at the hood opening
- External hood cinch for adjustability
- Glow in the dark, reflective zipper pull
- Durable water-repellent finish
- Left-hand and right-hand zippers available for zip-together functionality
- Certified by Control Union. License Number: CU 848416

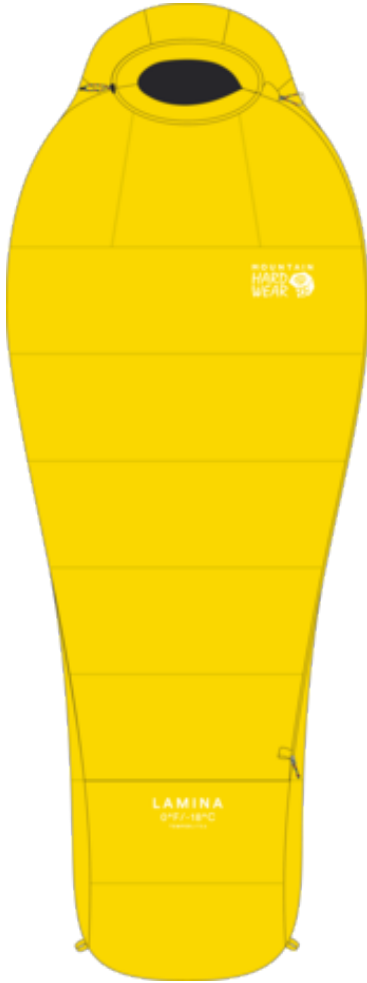
- The Responsible Down Standard certifies down against animal welfare requirements and tracks it from the source to the final product.

STOFFE

- Futter : 15D Nylon Ripstop 100% Nylon
- Obermaterial : 10D Recycled Nylon Ghost Ripstop 26 g/m² 100% Recycled Nylon

REG	▲ LH RH		Regular-Sleep Bags	
-----	---------	--	--------------------	--

LAMINA™ 0F/-18C LONG - 2095153



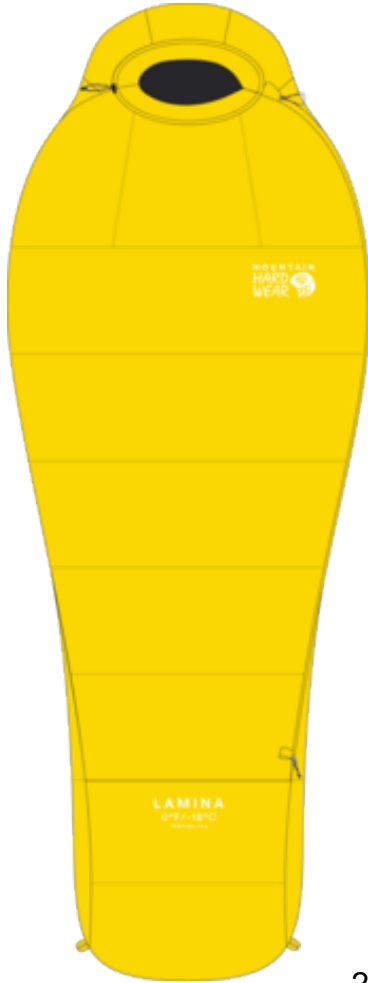
710 Electron Yellow

MERKMALE

- 20D polyester ripstop shell fabric is lightweight and compressible with DWR finish
- Proprietary, welded Lamina™ construction enhances loft and eliminates cold spots
- Temperlite™ insulation provides significant weight reduction without compromising warmth or loft
- Standard mummy cut is efficient, warm, and comfortable
- Zoned insulation maximizes thermal efficiency and weight saving
- Shaped draft collar blocks the escape of warm air from inside the bag
- Tailored hood comfortably blocks drafts and seals in warmth
- Light and durable, two-way #5 zipper with anti-snap for easy entry, exit, and ventilation
- Glow in the dark, reflective zipper pull
- Left-hand and right-hand zippers available for zip-together functionality
- Nylon compression sack and mesh storage sack included

LNG	▲ LH RH		Long-Sleep Bags	
-----	---------	--	-----------------	--

LAMINA™ 0F/-18C REG - 2095151



710 Electron Yellow

24

MERKMALE

- 20D polyester ripstop shell fabric is lightweight and compressible with DWR finish
- Proprietary, welded Lamina™ construction enhances loft and eliminates cold spots
- Temperlite™ insulation provides significant weight reduction without compromising warmth or loft
- Standard mummy cut is efficient, warm, and comfortable
- Zoned insulation maximizes thermal efficiency and weight saving
- Shaped draft collar blocks the escape of warm air from inside the bag
- Tailored hood comfortably blocks drafts and seals in warmth
- Light and durable, two-way #5 zipper with anti-snap for easy entry, exit, and ventilation
- Glow in the dark, reflective zipper pull
- Left-hand and right-hand zippers available for zip-together functionality
- Nylon compression sack and mesh storage sack included

REG	▲ LH RH		Regular-Sleep Bags	
-----	---------	--	--------------------	--

LAMINA™ 15F/-9C LONG - 2095163



443 Traverse

MERKMALE

- 20D polyester ripstop shell fabric is lightweight and compressible with DWR finish
- Proprietary, welded Lamina™ construction enhances loft and eliminates cold spots
- Temperlite™ insulation provides significant weight reduction without compromising warmth or loft
- Standard mummy cut is efficient, warm, and comfortable
- Zoned insulation maximizes thermal efficiency and weight saving
- Shaped draft collar blocks the escape of warm air from inside the bag
- Tailored hood comfortably blocks drafts and seals in warmth
- Light and durable, two-way #5 zipper with anti-snap for easy entry, exit, and ventilation
- Glow in the dark, reflective zipper pull
- Left-hand and right-hand zippers available for zip-together functionality
- Nylon compression sack and mesh storage sack included

LNG	▲ LH RH		Long-Sleep Bags	
-----	---------	--	-----------------	--

LAMINA™ 15F/-9C REG - 2095161



MERKMALE

- 20D polyester ripstop shell fabric is lightweight and compressible with DWR finish
- Proprietary, welded Lamina™ construction enhances loft and eliminates cold spots
- Temperlite™ insulation provides significant weight reduction without compromising warmth or loft
- Standard mummy cut is efficient, warm, and comfortable
- Zoned insulation maximizes thermal efficiency and weight saving
- Shaped draft collar blocks the escape of warm air from inside the bag
- Tailored hood comfortably blocks drafts and seals in warmth
- Light and durable, two-way #5 zipper with anti-snap for easy entry, exit, and ventilation
- Glow in the dark, reflective zipper pull
- Left-hand and right-hand zippers available for zip-together functionality
- Nylon compression sack and mesh storage sack included

REG	▲ LH RH		Regular-Sleep Bags	
-----	---------	--	--------------------	--

LAMINA™ W 15F/-9C LONG - 2095192



360 Synth Green

MERKMALE

- 20D polyester ripstop shell fabric is lightweight and compressible with DWR finish
- Proprietary, welded Lamina™ construction enhances loft and eliminates cold spots
- Temperlite™ insulation provides significant weight reduction without compromising warmth or loft
- Standard mummy cut is efficient, warm, and comfortable
- Zoned insulation maximizes thermal efficiency and weight saving
- Shaped draft collar blocks the escape of warm air from inside the bag
- Tailored hood comfortably blocks drafts and seals in warmth
- Light and durable, two-way #5 zipper with anti-snag for easy entry, exit, and ventilation
- Glow in the dark, reflective zipper pull
- Left-hand and right-hand zippers available for zip-together functionality
- Nylon compression sack and mesh storage sack included

LNG	▲ LH RH		Long-Sleep Bags	
-----	---------	--	-----------------	--

LAMINA™ W 15F/-9C REG - 2095191



360 Synth Green

MERKMALE

- 20D polyester ripstop shell fabric is lightweight and compressible with DWR finish
- Proprietary, welded Lamina™ construction enhances loft and eliminates cold spots
- Temperlite™ insulation provides significant weight reduction without compromising warmth or loft
- Standard mummy cut is efficient, warm, and comfortable
- Zoned insulation maximizes thermal efficiency and weight saving
- Shaped draft collar blocks the escape of warm air from inside the bag
- Tailored hood comfortably blocks drafts and seals in warmth
- Light and durable, two-way #5 zipper with anti-snap for easy entry, exit, and ventilation
- Glow in the dark, reflective zipper pull
- Left-hand and right-hand zippers available for zip-together functionality
- Nylon compression sack and mesh storage sack included

REG	▲ LH RH		Regular-Sleep Bags	
-----	---------	--	--------------------	--

POWABUNGA™ 32 PACK - 2097361



365 Mint Palm



010 Black



236 Dark Bolt

MERKMALE

- 500D CORDURA® Nylon is lightweight and durable
- Full back panel access allowing for easy in-out and packing functionality
- Unique padded hipbelt system with side-to-side and up-down pivoting mobility
- Dual large side zip pockets with expandable volume bellow for skins, extra gloves, water bottles
- Hydration reservoir compatible
- Dual density shoulder straps with insulated hydration tube routing
- Removable sternum strap with whistle buckle and multiple lash points
- Spring steel frame allows flex for mobility, while enabling efficient and stable load transfer to suspension
- Front avalanche tool pocket with large zip access and tool sleeves
- Top zip fleece-lined goggle pocket with optional top zip access to main compartment
- Front helmet hammock stows in pocket and allows helmet carry on front or bottom to accommodate a-frame or diagonal ski carry
- Stowable bottom diagonal ski loop with quick deploy tab
- Dual side compression straps with glove friendly buckles and Hypalon reinforced wings
- Wicking and snow shedding stretch woven back panel with an HDPE framesheet
- Foam-reinforced front panel to protect against diagonal ski/board edges and tools

S/M M/L			Equipment	
---------	--	--	-----------	--

MICROCHILL GAITER - 1944251



010 Black



MERKMALE

- Comfortable brushed fleece
- Full neck coverage

STOFFE

- Körper : Microfleece: 100% Recycled Polyester

O/S			Accessories	
-----	--	--	-------------	--

APRESPRO™ BEANIE - 2047591



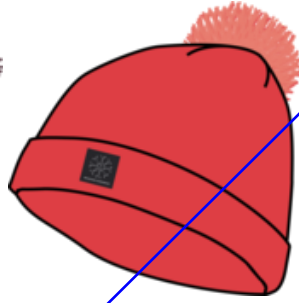
319 Dark Pine



010 Black



513 Blackberry



650 Solar Pink

MERKMALE

- Classic pom beanie with ribbed fold-over
- Unique patterns and colors

STOFFE

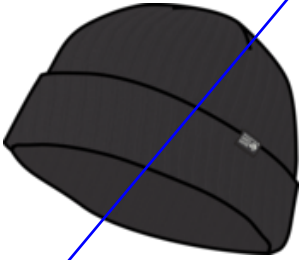
- Körper : 100% Recycled Polyester

O/S			Accessories	
-----	--	--	-------------	--

CAMPOUT™ BEANIE - 2047631



430 Montauk Blue



010 Black



233 Golden Brown

MERKMALE

- Minimalist, engineered knit for shape
- Subtle lockup clamp label

STOFFE

- Körper : Recycled Polyester Wool Blend: 71% Recycled Polyester, 29% Wool

O/S			Accessories	
-----	--	--	-------------	--

EVERYONE'S FAVORITE™ BEANIE - 1975461



233 Golden Brown

010 Black

319 Dark Pine

430 Montauk Blue

650 Solar Pink

MERKMALE

- Recycled polyester and wool yarns for softness, warmth and easy care
- Can be worn cuffed or full length

STOFFE

- Körper : 100% Recycled Polyester

O/S			Accessories	
-----	--	--	-------------	--

CABIN TO CURB™ BEANIE - 2005591



353 Combat Green

010 Black

257 Copper Clay

417 Blue Slate

MERKMALE

- 100% recycled polyester with a recycled polyester fleece lining
- Woven MHW label with merrowed edge

STOFFE

- Körper : 100% Recycled Polyester
- Futter : 100% Recycled Polyester Fleece

O/S			Accessories	
-----	--	--	-------------	--

LONE PINE™ BEANIE - 1944191



361 Mantis Green

010 Black

513 Blackberry

MERKMALE

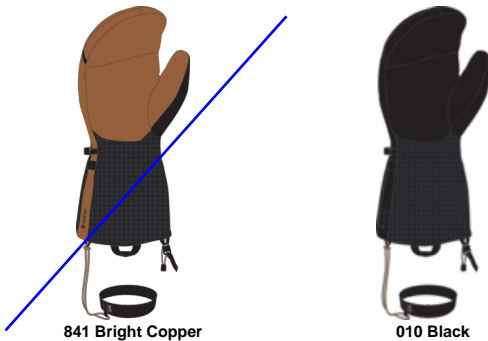
- Recycled blend of polyester and wool
- Designed for use in activity and post activity
- Double layer for superb warmth

STOFFE

- Körper : Recycled Polyester, Wool Blend: 71%
Recycled Polyester, 29% Wool

O/S			Accessories	
-----	--	--	-------------	--

ABSOLUTE ZERO™ GORE-TEX® MITT - 2096381



841 Bright Copper

010 Black

MERKMALE

- Engineered with Gore-Tex, offering enduring weather protection, comfort, balanced heat transfer, and optimum moisture management
- 800-fill goose down on back of hand retains critical loft for consistent, dependable warmth
- Primaloft Gold™ insulation with Cross Core is fused with aerogel technology for the highest level of warmth in any conditions
- Pittards™ goat leather adds durability and abrasion resistance
- Pertex® 20D ripstop is lightweight and Diamond Fuse™ fabric technology provides extra durability and stability over extended use
- Soft and warm fleece lining

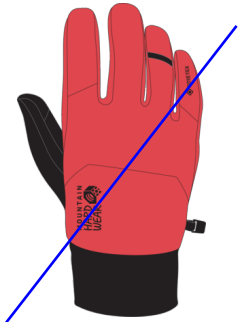
- Quick release adjustment and two-stage closure
- Carabiner loop for hanging off harness keeps gloves dry when not in use
- Extra long gauntlet fits over bulky jacket sleeves
- Comfortable wrist leash made with reclaimed materials
- Pull-on webbing loop at wrist

STOFFE

- Körper : Pertex® 20D Diamond Fuse Ripstop
- Futter : 300g high-pile Shearling 100% Polyester
- Obermaterial : Pertex® 20D Diamond Fuse Ripstop

XS S M L XL			Accessories	
-------------	--	--	-------------	--

KAPOW™ GORE-TEX® GLOVE - 2099371



650 Solar Pink



010 Black



361 Mantis Green

MERKMALE

- Engineered with Gore-Tex, offering enduring weather protection, comfort, balanced heat transfer, and optimum moisture management
- Warm moisture-wicking fleece lining
- Synthetic suede palm
- Plush rib-knit cuff
- Modern minimalist style
- Carabiner loop for easy drying

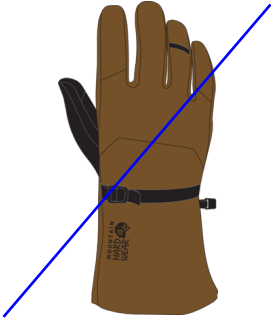
- Futter : Feather-weight Polyester Microfleece
- Handfläche : AX® Suede Synthetic Leather

STOFFE

- Körper : Recycled Nylon Faile

XS S M L XL			Accessories	
-------------	--	--	-------------	--

ALL TRACKS™ GORE-TEX® GLOVE - 2097101



233 Golden Brown



010 Black

MERKMALE

- Engineered with Gore-Tex, offering enduring weather protection, comfort, balanced heat transfer, and optimum moisture management
- Warm moisture-wicking fleece lining
- Gauntlet cuff with quick-release adjustment and two-stage closure.
- Removeable wrist tether made from reclaimed waste fiber with comfortable stretch cuff.
- Soft synthetic suede nose wipe on back of thumb
- Webbing hang loop on ring fingers for easy dry hanging

STOFFE

- Körper : Coated Polyester
- Futter : Microfleece Palm, High Pile Fleece Back of Hand
- Handfläche : PU Grip Coated Polyester
- Obermaterial : Coated Polyester

S M L XL XXL			Accessories	
--------------	--	--	-------------	--

ALL TRACKS™ GORE-TEX® MITT - 2083111



341 White Sage Snowdrifts Print



010 Black



233 Golden Brown

MERKMALE

- Engineered with Gore-Tex, offering enduring weather protection, comfort, balanced heat transfer, and optimum moisture management
- Warm moisture-wicking fleece lining
- Gauntlet cuff with quick-release adjustment and two-stage closure.
- Removeable wrist tether made from reclaimed waste fiber with comfortable stretch cuff.
- Soft synthetic suede nose wipe on back of thumb
- Webbing hang loop on ring fingers for easy dry hanging

STOFFE

- Körper : Coated Polyester
- Futter : Microfleece Palm, High Pile Fleece Back of Hand
- Handfläche : PU Grip Coated Polyester
- Obermaterial : Coated Polyester

XS S M L XL XXL			Accessories	
-----------------	--	--	-------------	--

ALL TRACKS™ GORE-TEX® GLOVE - 2097211



341 White Sage Snowdrifts Print



010 Black

MERKMALE

- Engineered with Gore-Tex, offering enduring weather protection, comfort, balanced heat transfer, and optimum moisture management
- Warm moisture-wicking fleece lining
- Gauntlet cuff with quick-release adjustment and two-stage closure.
- Removeable wrist tether made from reclaimed waste fiber with comfortable stretch cuff.
- Soft synthetic suede nose wipe on back of thumb
- Webbing hang loop on ring fingers for easy dry hanging

STOFFE

- Körper : Coated Polyester
- Futter : Microfleece Palm, High Pile Fleece Back of Hand
- Handfläche : PU Grip Coated Polyester
- Obermaterial : Coated Polyester

S M L			Accessories	
-------	--	--	-------------	--

POWER STRETCH® STIMULUS™ GLOVE - 2015911



010 Black



MERKMALE

- Polartec® Power Stretch® fabric
- Stimulus™ technology on index and thumb for touchscreen compatibility
- Palm overlay for added grip and durability

STOFFE

- Körper : Polartec Recycled PowerStretch: 84% Recycled Polyester, 16% Elastane
- Obermaterial : Polartec Recycled PowerStretch: 84% Recycled Polyester, 16% Elastane

XXS XS S M L XL			Accessories	
-----------------	--	--	-------------	--

STYLE NAME INDEX

Absolute Zero™ Gore-Tex® Mitt.....	56	Ventano™ Hoody.....	15,39
Absolute Zero™ Suit.....	9,33	Ventano™ Jacket.....	15
All Tracks™ GORE-TEX® Glove.....	57,58		
All Tracks™ GORE-TEX® Mitt.....	58	Yumalina™ Lined Pant.....	43
ApresPro™ Beanie.....	54	Yumalino™ Lined Pant.....	21
Bear™ Short Sleeve.....	24		
Big Cottonwood™ Long Sleeve Shirt.....	19		
Boundary Ridge™ GORE-TEX Bib.....	2,26		
Boundary Ridge™ GORE-TEX Jacket.....	2,25		
Box Logo™ Long Sleeve.....	23		
Butter Up™ Half Zip.....	20,42		
Butter Up™ Slim Pant.....	20		
Butter Up™ Tight.....	43		
Cabin to Curb™ Beanie.....	55		
Campout™ Beanie.....	54		
Chockstone™ Alpine Hooded Jacket.....	7,31		
Chockstone™ Alpine LT Hooded Jacket.....	8,32		
Chockstone™ Alpine LT Pant.....	9,32		
Chockstone™ Alpine Pant.....	8,31		
Cloud Bank™ GORE-TEX Jacket.....	3,26		
Cloud Bank™ GORE-TEX Pant.....	3,27		
Everyone's Favorite™ Beanie.....	55		
First Tracks™ Bib.....	4		
First Tracks™ Jacket.....	4		
First Tracks™ Pant.....	5		
Ghost Whisperer™ Hoody.....	10,34		
Ghost Whisperer™ Jacket.....	11,34		
Ghost Whisperer™ Pant.....	11,35		
Ghost Whisperer™ UL Hoody.....	10,33		
Hardware AP™ Crossover Pant.....	21		
HiCamp™ Fleece Hoody.....	17		
HiCamp™ Printed Pullover.....	41		
Kapow™ GORE-TEX® Glove.....	57		
Kor AirShell™ Warm Hoody.....	14,38		
Kor Alloy™ Crew.....	1,24		
Kor Alloy™ Tight.....	1,25		
Kor Stasis™ Hoody.....	14,38		
Lamina™ 0F/-18C Long.....	47		
Lamina™ 0F/-18C Reg.....	48		
Lamina™ 15F/-9C Long.....	49		
Lamina™ 15F/-9C Reg.....	50		
Lamina™ W 15F/-9C Long.....	51		
Lamina™ W 15F/-9C Reg.....	52		
Lone Pine™ Beanie.....	56		
MHW Back Logo™ Long Sleeve.....	23		
MHW Logo™ Pullover Crew.....	44		
MHW Logo™ Pullover Hoody.....	22		
Microchill Gaiter.....	53		
Microchill™ Full Zip Jacket.....	17,40		
Phantom™ 15F/-9C Long.....	45		
Phantom™ 15F/-9C Reg.....	46		
Plusher™ Long Sleeve Shirt.....	18,42		
Plusher™ Microchill Lined Shirt.....	19		
Polartec® High Loft™ Jacket.....	16,39		
Polartec® Power Grid™ Full Zip Hoody.....	16		
Powabunga™ 32 Pack.....	53		
Powder Maven™ Bib.....	28		
Powder Maven™ Down Jacket.....	27		
Powder Maven™ Jacket.....	28		
Powder Maven™ Pant.....	29		
Power Stretch® Stimulus™ Glove.....	59		
Rockrydge™ Pant.....	22		
Sendura™ Hoody.....	40		
Storm Whisperer™ Insulated Jacket.....	5,29		
Stretch Ozonic™ Insulated Jacket.....	6		
Stretch Ozonic™ Jacket.....	6,30		
Stretch Ozonic™ Pant.....	7,30		
Stretchdown™ Hoody.....	12,36		
Stretchdown™ Light Full Zip Hoody.....	12,36		
Stretchdown™ Light Jacket.....	13,37		
Stretchdown™ Light Shacket.....	13		
Stretchdown™ Light Vest.....	37		
Stretchdown™ Parka.....	35		
Summit Grid™ Half Zip.....	18,41		

STYLE NUMBER INDEX

1899101.....	9	2100581.....	22
1913591.....	19	2100601.....	23
1915991.....	18	2104181.....	17
1939661.....	33	2104301.....	41
1944191.....	56	2104331.....	42
1944251.....	53	2104451.....	10
1975461.....	55	2104461.....	11
		2104491.....	12
2003981.....	13	2104521.....	13
2004341.....	44	2104541.....	16
2005591.....	55	2104591.....	16
2015911.....	59	2104701.....	17
2043201.....	25	2104731.....	34
2043211.....	26	2104741.....	34
2043301.....	2	2104781.....	36
2043311.....	2	2104801.....	37
2047591.....	54	2104811.....	37
2047631.....	54	2104841.....	39
2063191.....	8	2104861.....	40
2063201.....	9	2104881.....	40
2063331.....	32	2105641.....	41
2063361.....	32	2105701.....	18
2063661.....	46		
2063663.....	45		
2068041.....	22		
2077021.....	5		
2077551.....	1		
2077571.....	5		
2077581.....	24		
2077601.....	29		
2077621.....	1		
2077651.....	25		
2077681.....	36		
2077691.....	35		
2077711.....	29		
2077731.....	31		
2077751.....	12		
2077761.....	7		
2079671.....	19		
2079721.....	21		
2079841.....	24		
2083111.....	58		
2084621.....	42		
2084641.....	43		
2084661.....	20		
2084681.....	20		
2091871.....	8		
2091881.....	3		
2091901.....	3		
2091991.....	4		
2092021.....	4		
2092031.....	11		
2092051.....	10		
2092121.....	14		
2092151.....	14		
2092311.....	6		
2092331.....	15		
2092351.....	15		
2092441.....	31		
2092451.....	26		
2092461.....	27		
2092691.....	35		
2092701.....	33		
2092731.....	38		
2092751.....	38		
2092861.....	39		
2092891.....	28		
2092901.....	28		
2092931.....	27		
2093461.....	6		
2093471.....	30		
2093481.....	30		
2093501.....	7		
2095151.....	48		
2095153.....	47		
2095161.....	50		
2095163.....	49		
2095191.....	52		
2095192.....	51		
2095451.....	43		
2095941.....	21		
2096381.....	56		
2097101.....	57		
2097211.....	58		
2097361.....	53		
2099371.....	57		
2100571.....	23		